

TRST-A00 PrinterDriverfor WindowsXP/2000 User'sManual

FirstEdition :November06,2009

TOSHIBA TEC SINGAPORE PTE LTD

Copyright(C)2009
TOSHIBATECSINGAPOREPTELTD

This document describes the precautions for using the TRST-A00 Printer Driver for Windows XP/2000.

This document assumes that the reader is familiar with the following:

- General characteristics of Windows and Printer Driver for Windows.
- General characteristics of TRST-A00 printer

Notes:

- All rights reserved. It is prohibited to use or duplicate a part or whole of this document without the permission of TOSHIBA TEC SINGAPORE PTE LTD.
- This document is subject to change without prior notice.
- * Microsoft, Windows, Windows 2000, and Windows XP are registered trademarks of Microsoft Corporation in the United States and/or other countries.
- * The official name of Windows is the Microsoft Windows Operating System.

No.SPAA-344

TRST-A00-PrinterDriverforWindowsXP/2000User'sManual

Rev.No.	Date	Pages	Description
01	Nov06,2009	---	Originalissue

Table of Contents

1	Operation Environment	5
2	How to install the Printer Driver	6
2.1	Install by plug and play (Available on USB I/F and Parallel I/F)	6
2.1.1	Hardware Wizard	6
2.2	Manual Install through "Add Printer" wizard (Serial I/F)	10
2.2.1	Add Printer	10
3	How to update the Printer Driver	17
3.1	Update Driver	17
4	How to uninstall the Printer Driver	21
4.1	Uninstall Printer Driver for Windows XP	21
4.2	Uninstall Printer Driver for Windows 2000	24
5	Examples for receipt printing	28
5.1	Receipt printing	28
5.1.1	Document setting	30
5.1.2	Logo setting	31
5.1.3	Font setting	31
5.1.4	Barcode setting	32
5.1.5	Control A Font setting	33
5.2	Print Rendering	35
6	Note	37
6.1	Log file setting	37

1 OperationEnvironment

Thisprinterdriverworkswithbelowenvironment.

OS	Windows2000(SP4),WindowsXP(SP1,SP2,SP3)
I/F	Serial(RS232C),USB

2 How to install the Printer Driver

2.1 Install by plug and play (Available on USB and Parallel/F)

- Set the "Printer Class" of USB Type in the diagnostic settings.
- Connect the printer with switched on and your PC will detect the new printer, after that, go to 2.1.1 ("Hardware Wizard") and allow the operation to proceed the installation.

2.1.1 Hardware Wizard

Select "Install the software automatically (Recommended)". Click "Next>".



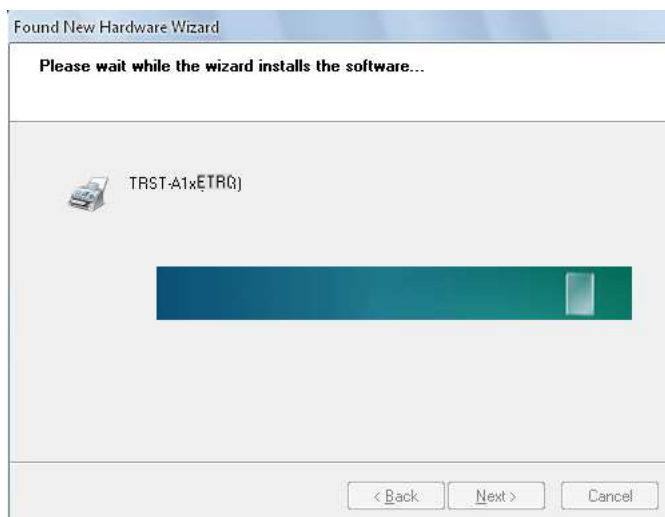
Waiting for hardware wizard to search driver.



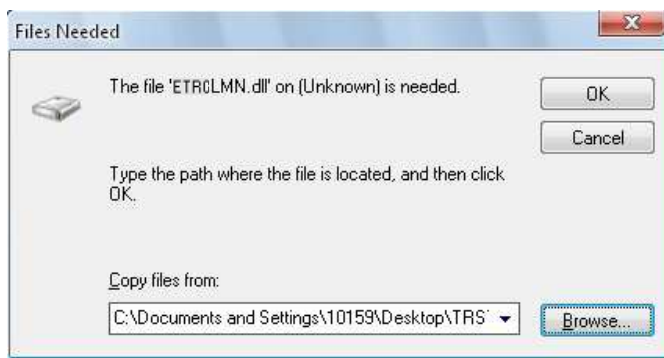
Click "Continue Anyway" to ignore below warning message.



Waiting for hardware wizard to install the software.



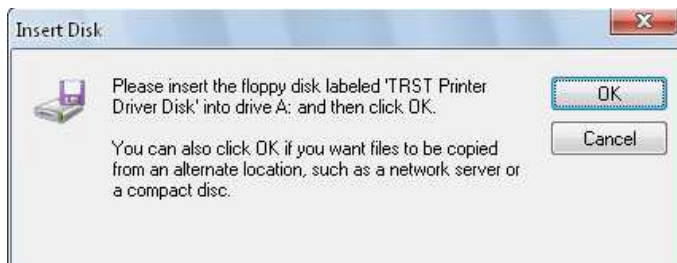
Click "Browse..." and select the folder where the printer driver is saved. Click "OK".



Start copying the necessary files.



Click "OK" to continue.



Click "Browse..." and select the folder where the printer driver is saved. Click "OK".



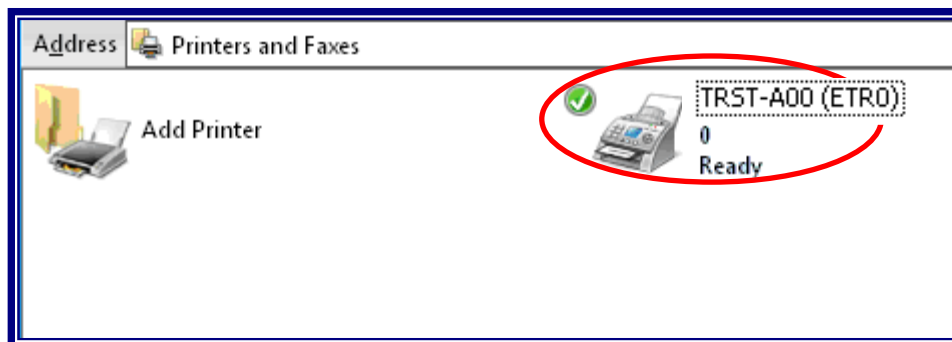
Start copying the necessary files.



Click "Finish" to complete the installation.



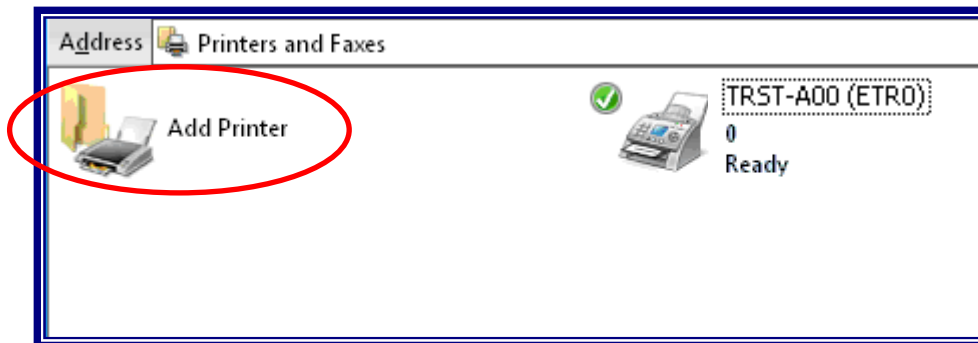
After installation finished, you'll see the "TRST-A 00(ETRO)" icon in the "Printers and Faxes" folder.



2.2 Manual Install through "Add Printer" wizard (Serial/F)

2.2.1 Add Printer

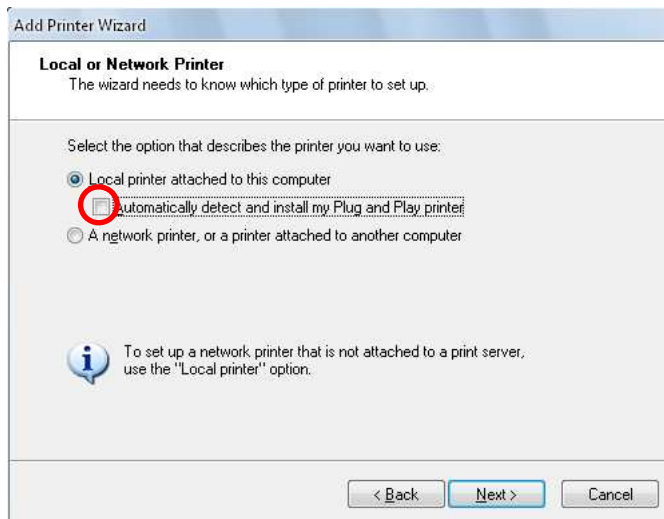
Run "Add Printer" wizard through the "Printers and Faxes" folder.



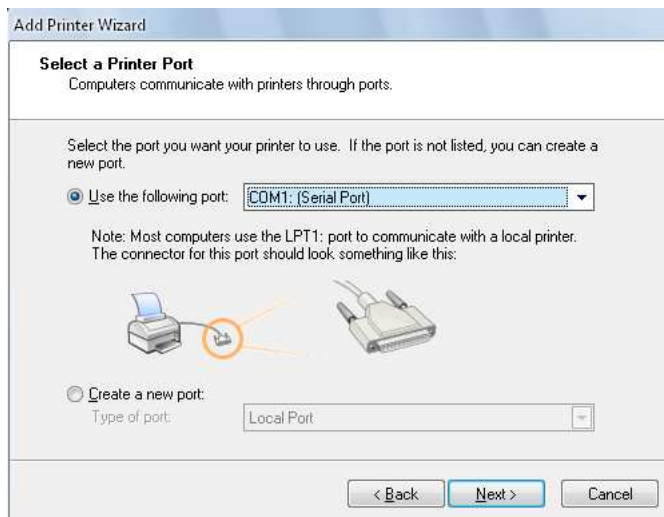
Click "Next >" on the below screen.



Select "Local printer attached to this computer" and **does not check** "Automatically detect and install my Plug and Play printer". Click "Next >".



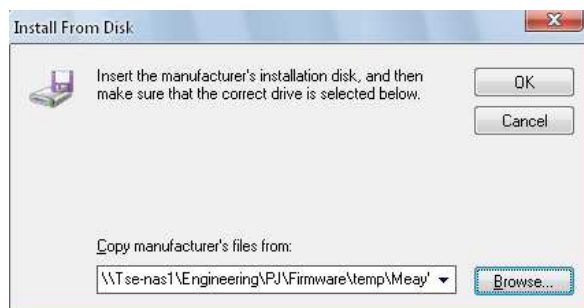
Select the port (I/F) you want to use and click "Next >".
Below is the example for selecting "COM1" of Serial I/F.



Click "Have Disk..." on below screen.



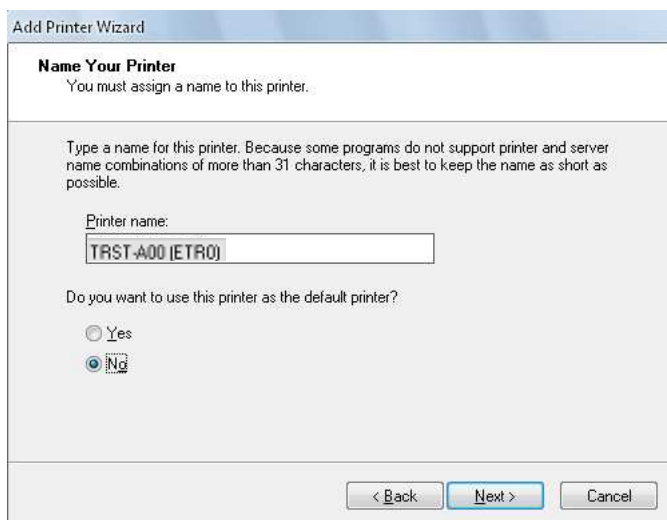
Specify the folder where the printer driver is saved. d. Click "OK".



Click "Next>" on below screen.



Supply a name for this printer which you want to use. e. And if you want to use the printer as the default printer, click "Yes". Click "Next>" to continue the installation.



Select "Do not share this printer" and click "Next >".

Add Printer Wizard

Printer Sharing
You can share this printer with other network users.

If you want to share this printer, you must provide a share name. You can use the suggested name or type a new one. The share name will be visible to other network users.

☒ Do not share this printer

☐ Share name:

< Back Next > Cancel

If you want to print a test page, select "Yes". Click "Next >".

Add Printer Wizard

Print Test Page
To confirm that the printer is installed properly, you can print a test page.

Do you want to print a test page?

☒ Yes

☐ No

< Back Next > Cancel

Click "Finish" to start copying the necessary files .



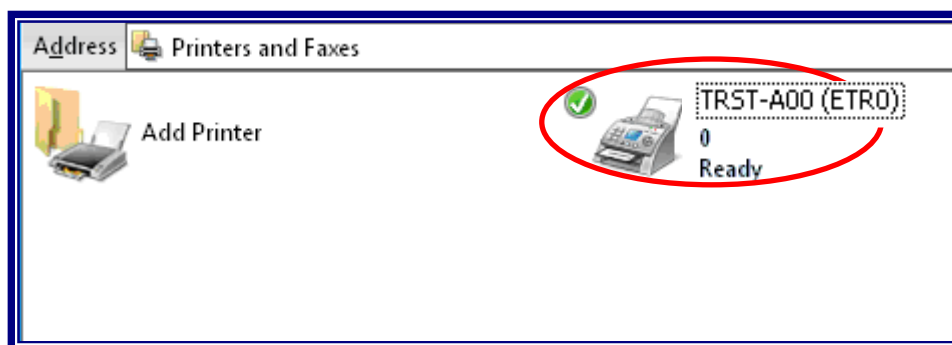
Click "Continue Anyway" to ignore below warning message and to complete the installation.



Start copying the necessary files.



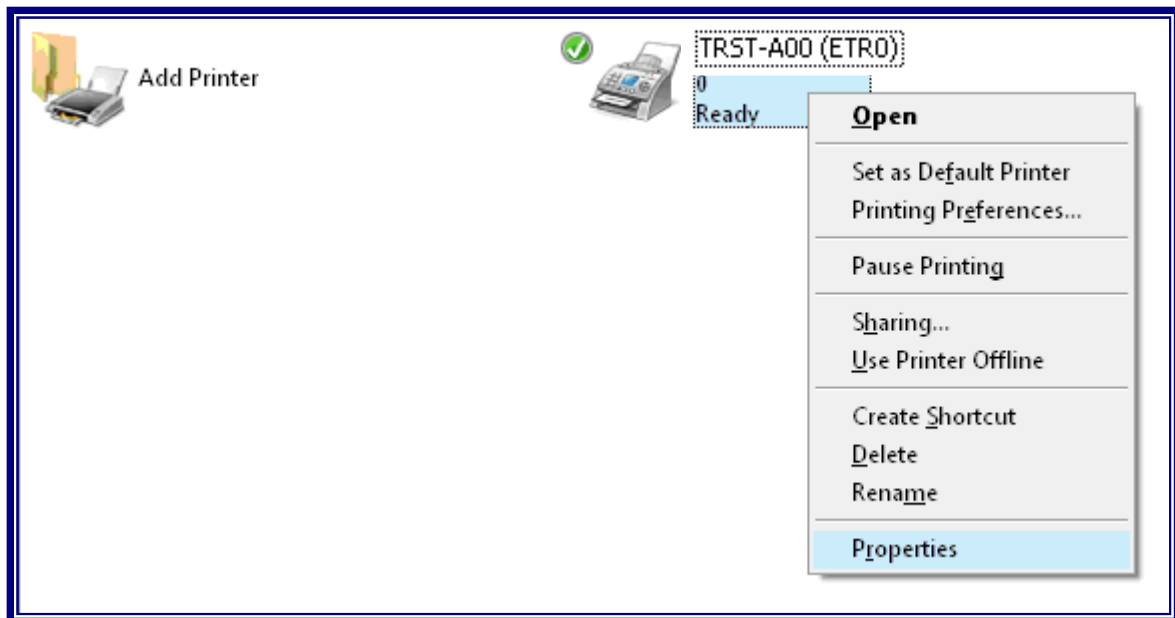
After installation finished, you'll see the "TRST-A 00(ETRO)" icon in the "Printers and Faxes" folder.



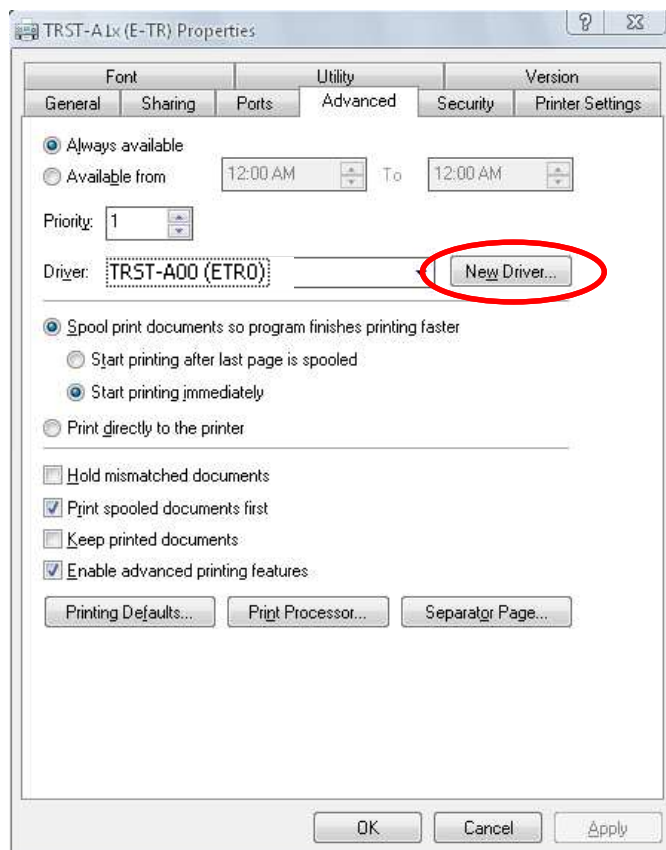
3 How to update the Printer Driver

3.1 Update Driver

Click right button and select "Properties..." on the "TRST-A00" icon to open the printer's property.



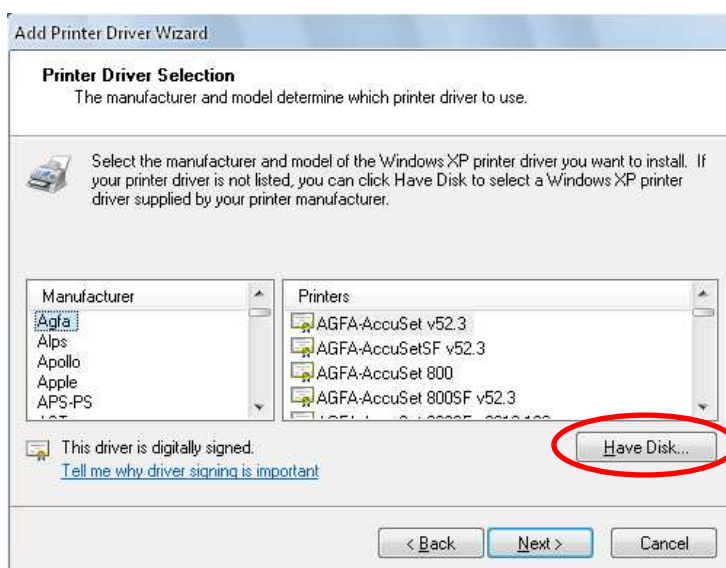
Select **advanced** tab. Click "New Driver" on below screen.



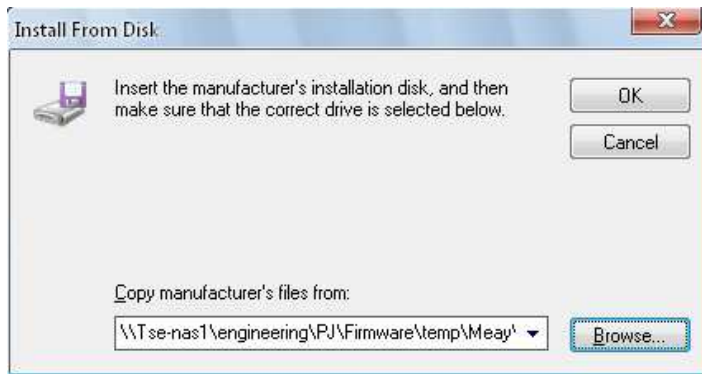
Click "Next>" on below screen.



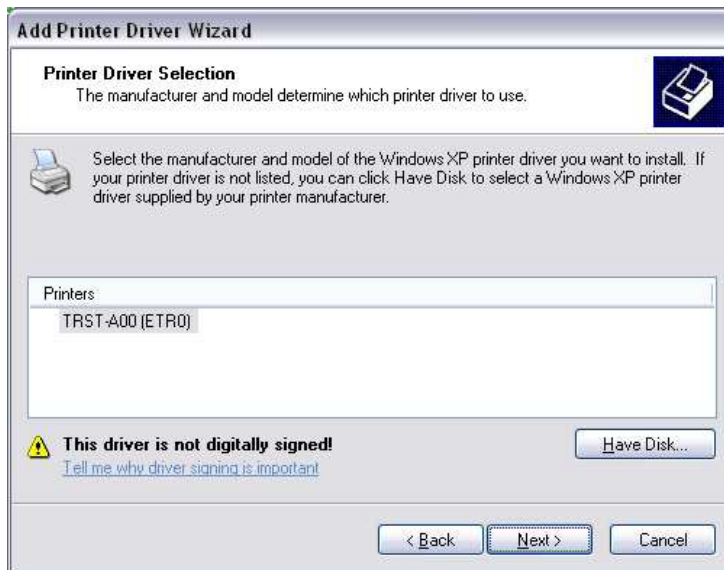
Click "Have Disk..." on below screen.



Specify the folder where the printer driver is saved. d. Click "OK".



Click "Next >" on below screen.



Click "Finish" to completing the driver update.



Click "Continue Anyway" to ignore below warning message.



Start copying the necessary files.

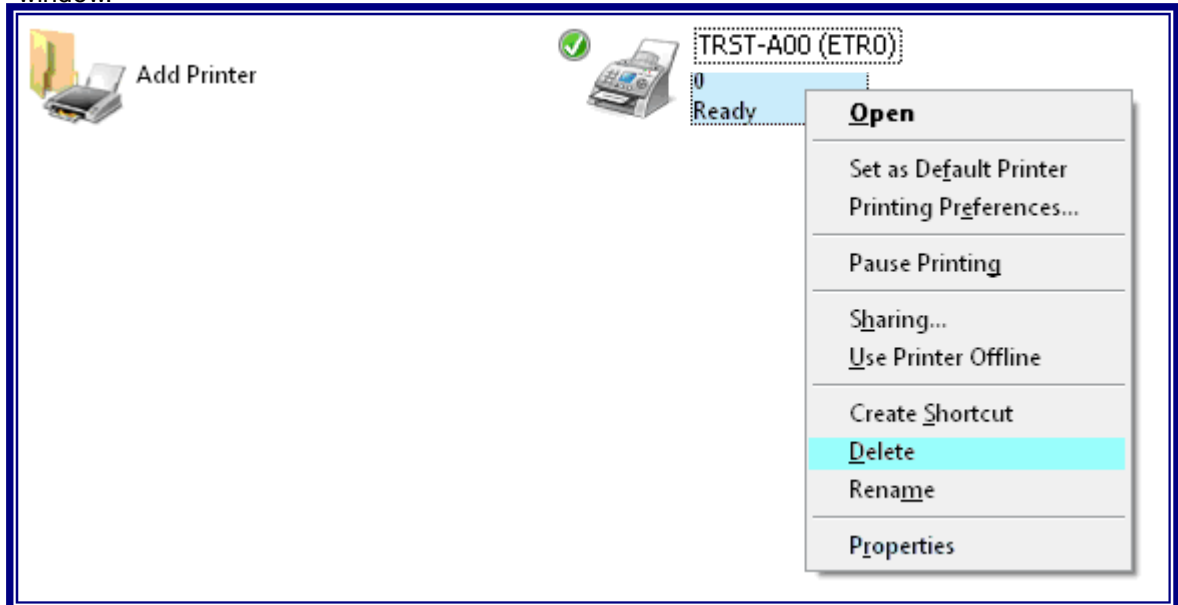


Lastly, **restart** the computer to update the printer driver.

4 How to uninstall the Printer Driver

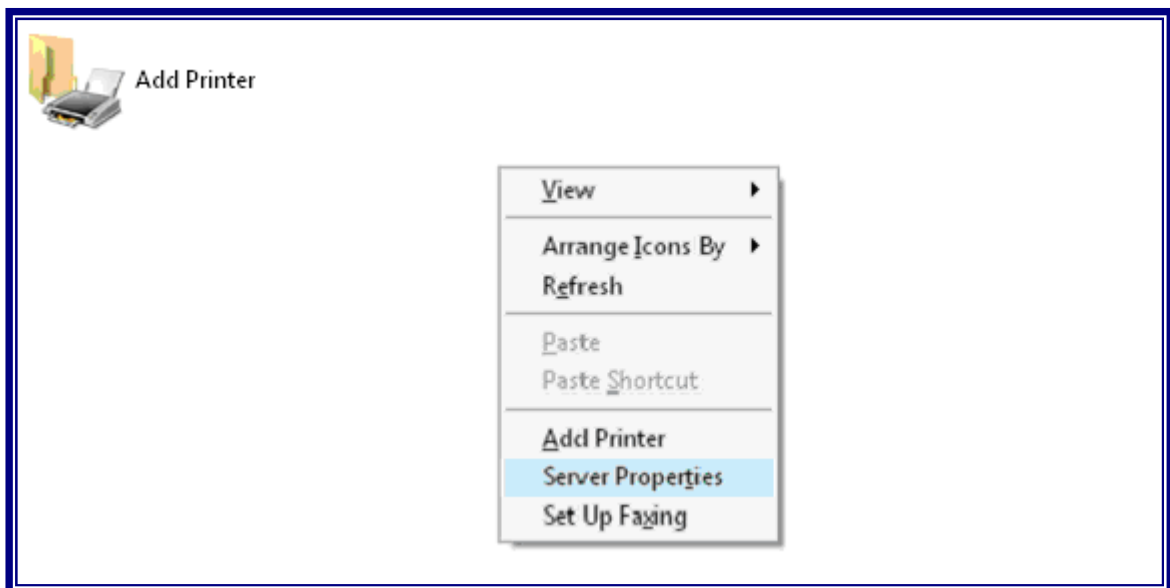
4.1 Uninstall Printer Driver for Windows XP

Right-click on the "TRST-A00(ETR0)" icon in the "Printers and Faxes" folder. Select "Delete" below window.

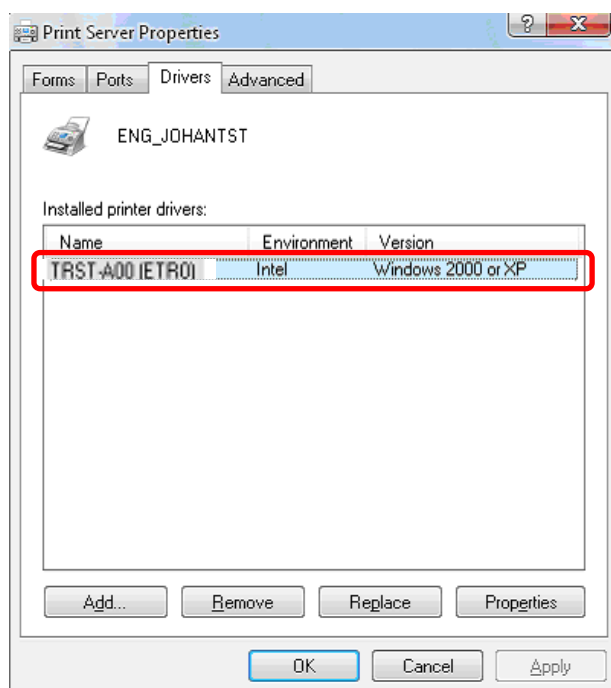


Restart PC.

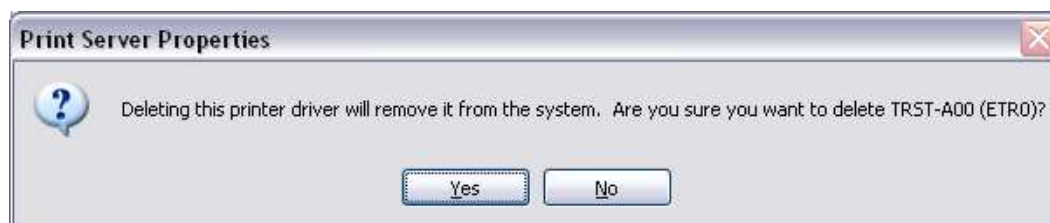
Then right-click to select "Server Properties" on the "Printers and Faxes" folder.



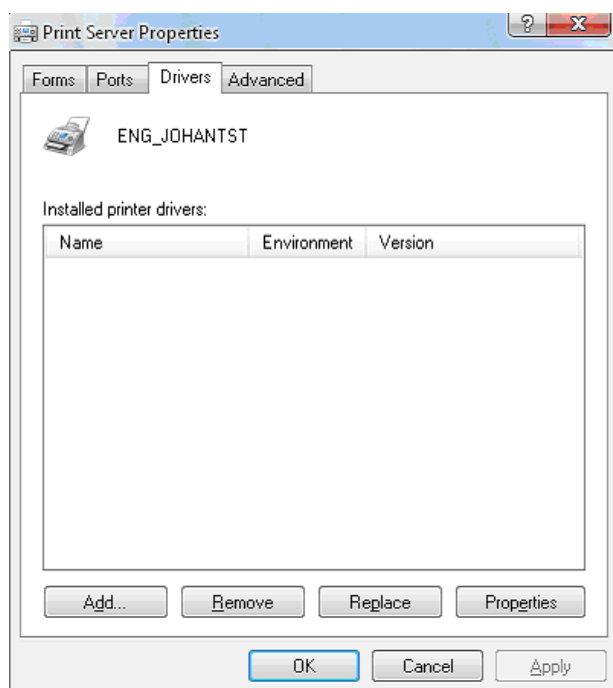
Select "TRST-A00 (ETR0)" on below screen and click "Remove".



Click "Yes" on below dialog to remove the printer driver.

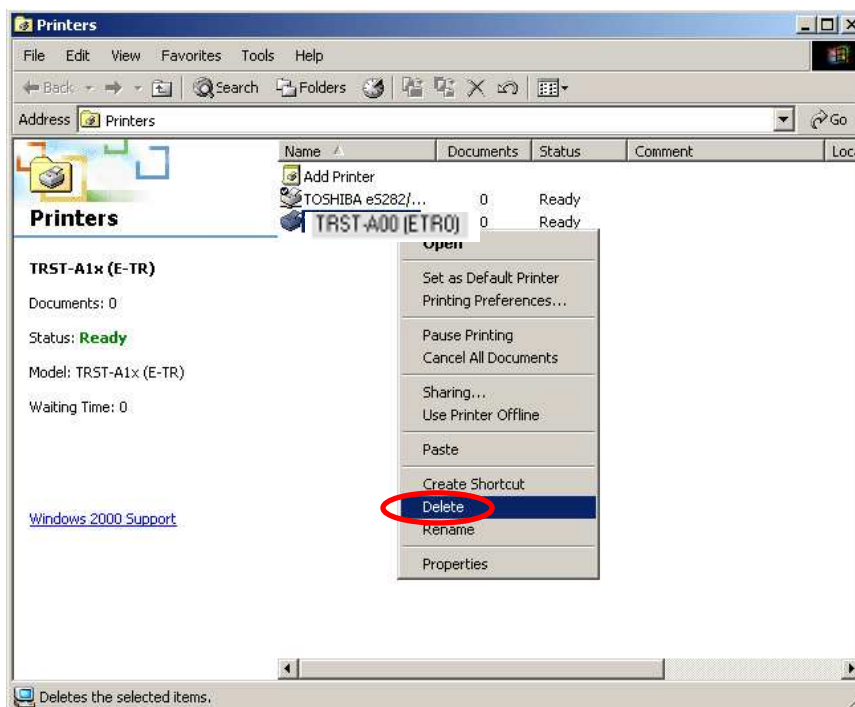


The printer driver for "TRST-A00(ETR0)" is successfully removed.

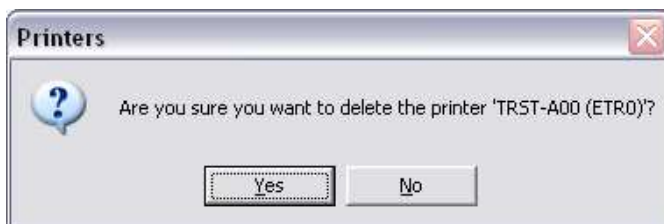


4.2 UninstallPrinterDriverforWindows2000

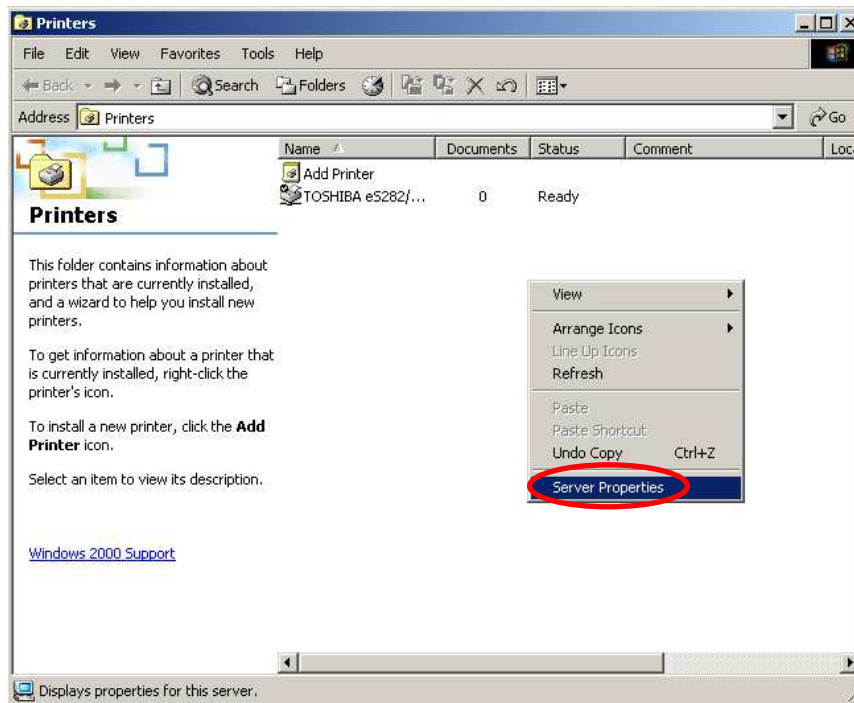
Rightclickonthe"TRST-A00(ETR0)"iconinthe"P rinters"folder.Select"Delete"belowwindow.



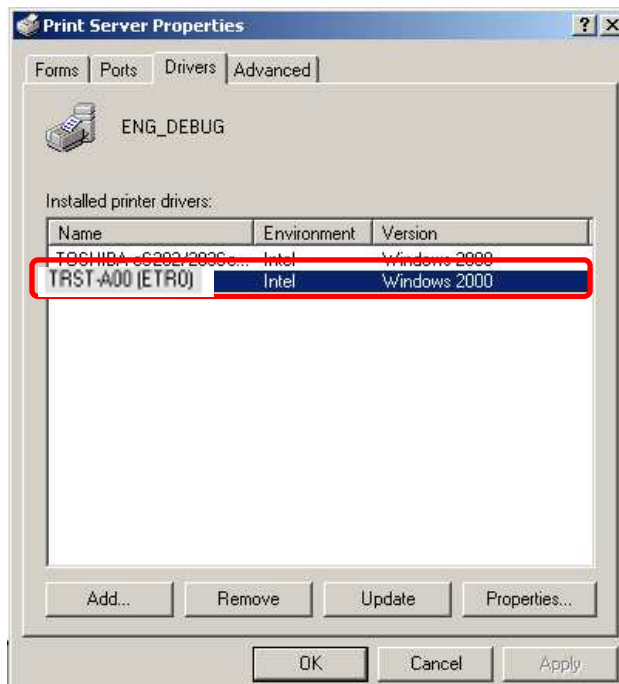
Click"Yes"onbelowdialogtodeletetheprinter" TRST-A00(ETR0)".



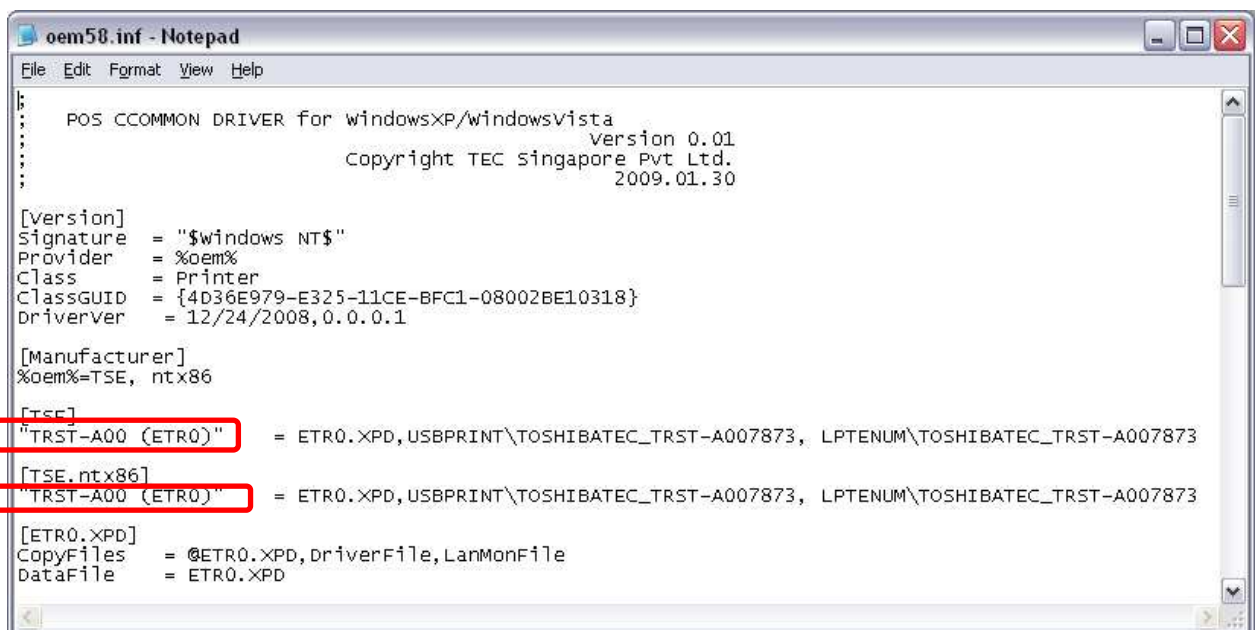
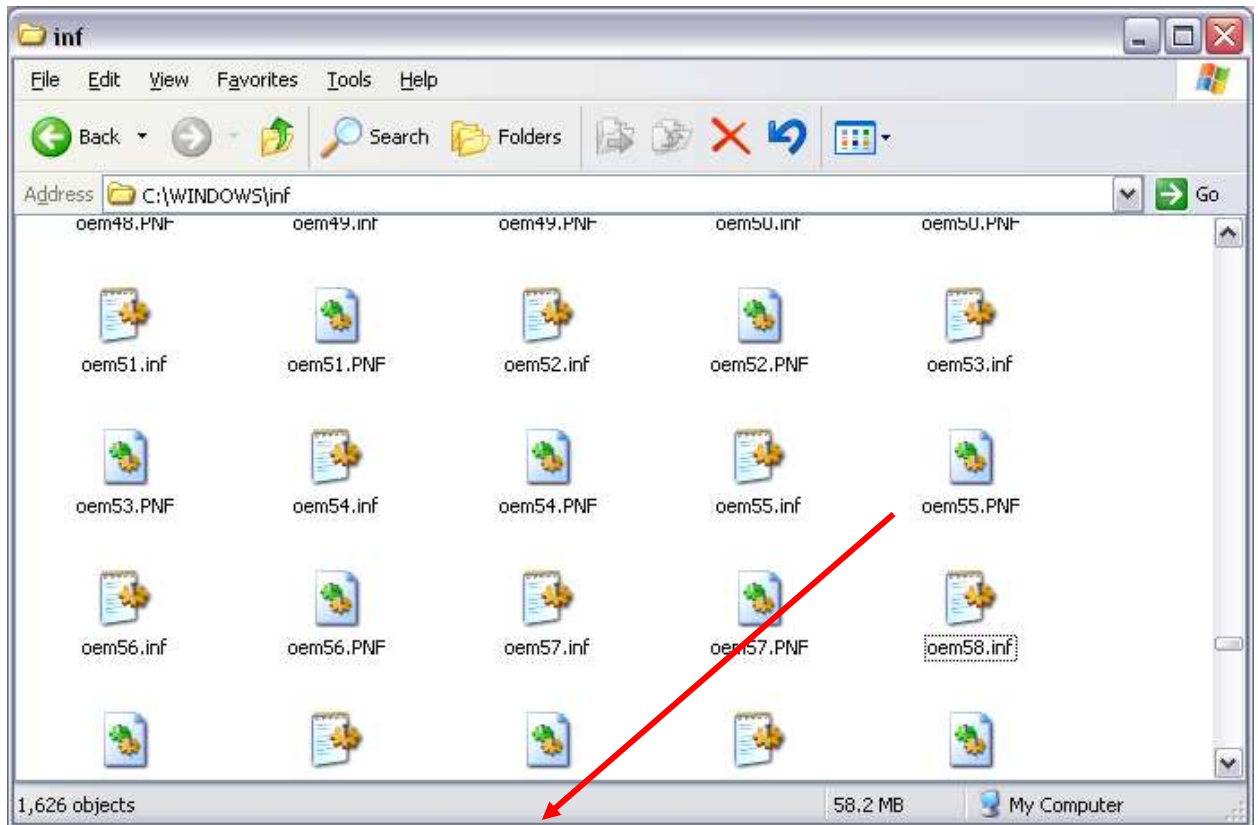
Rightclick to select "Server Properties" on "Printers" folder.



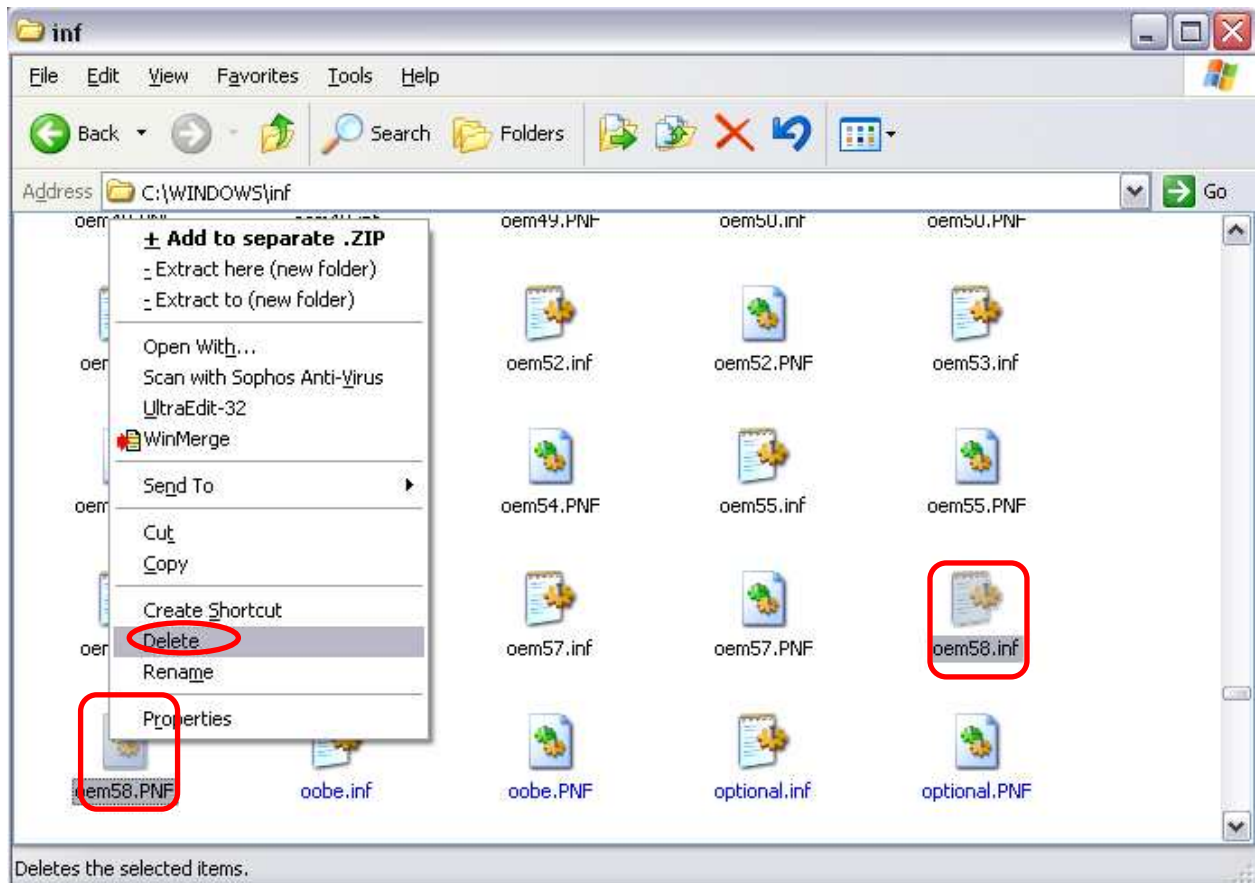
Select "TRST-A00(ETR0)" on below screen and click "Remove".



Goto "C:\WINDOWS\inf". Open and search the "oem_.inf" file which with content of "TRST-A00 (ETRO)".

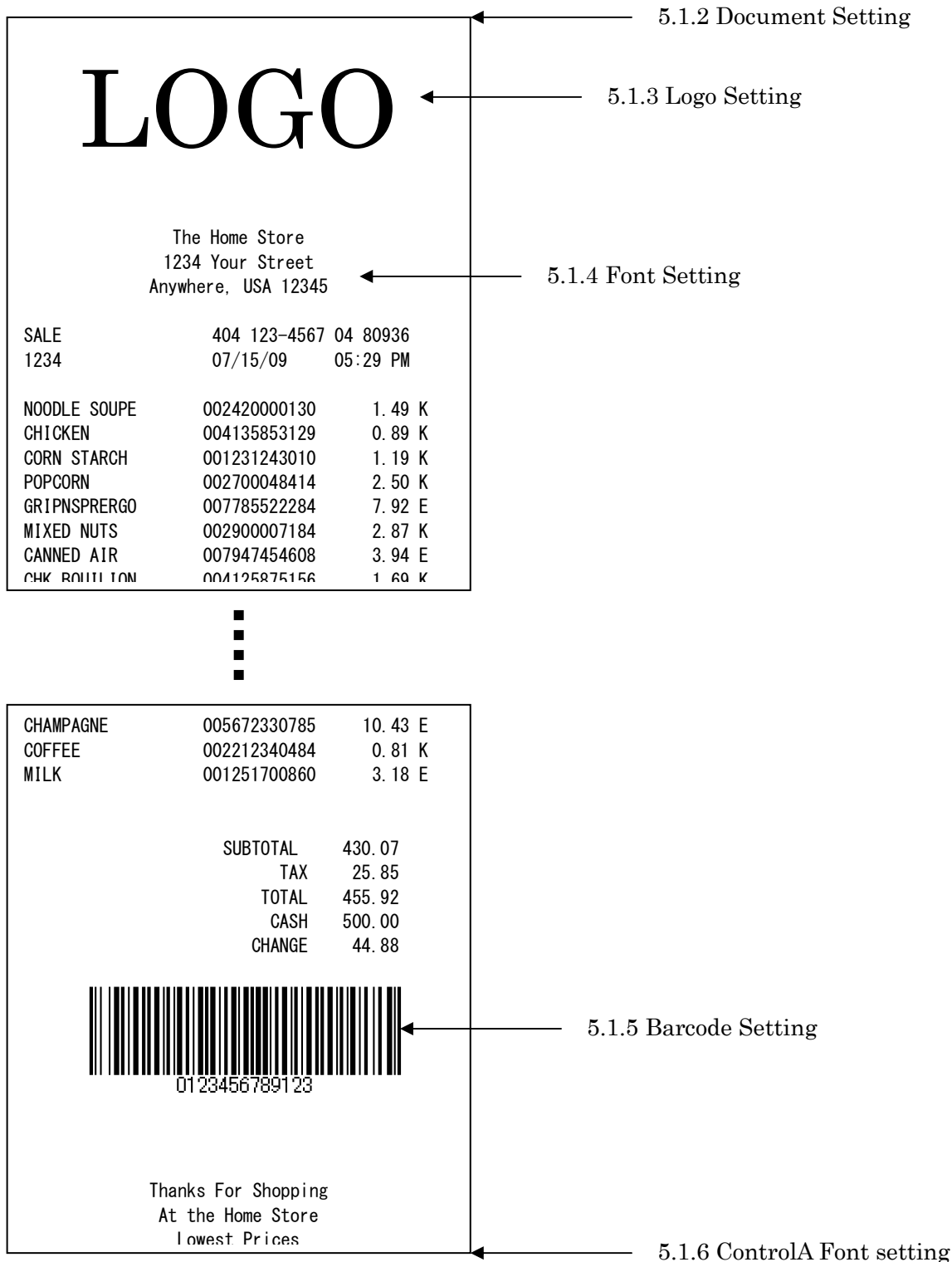


Delete both "oem_.Inf" and "oem_.PNF" file which with the content of "TRST-A00(ETR0)".
to remove the driver completely.

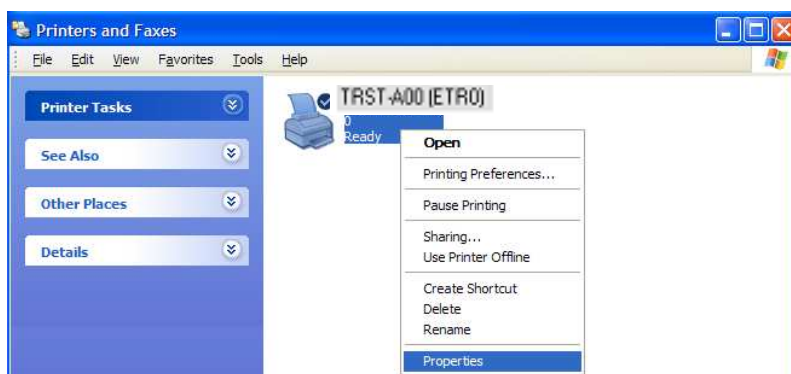


5 Examples for receipt printing

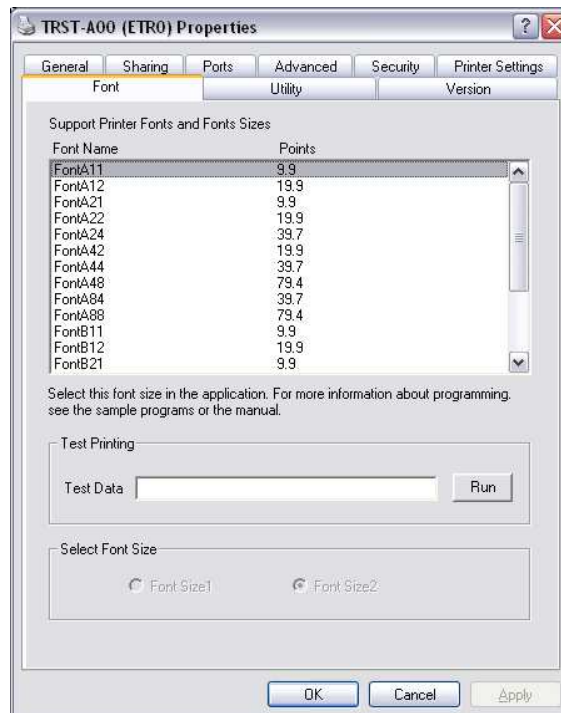
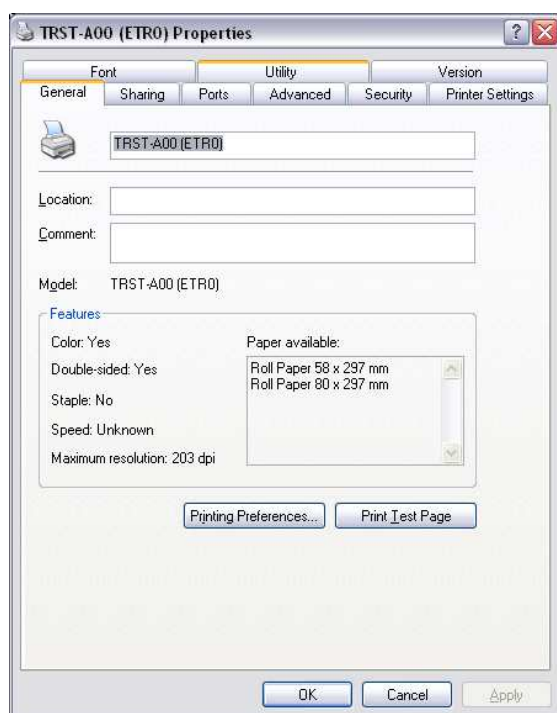
5.1 Receipt printing



- 1) Click right button and select "Properties" on the "TRST-A00" icon to open the printer's property.

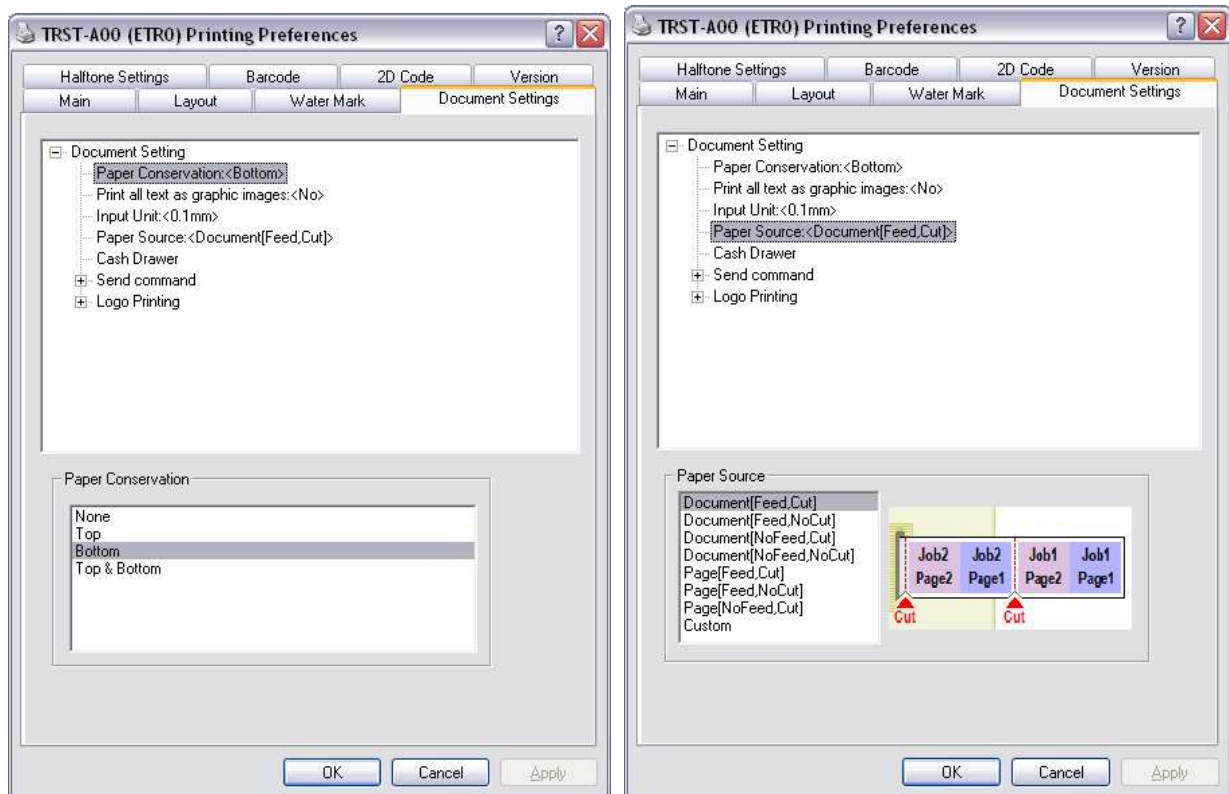


- 2) Click on **Font** tab. Select the Font Size you want. Click "OK". Font size has to correspond to the printer font setting.



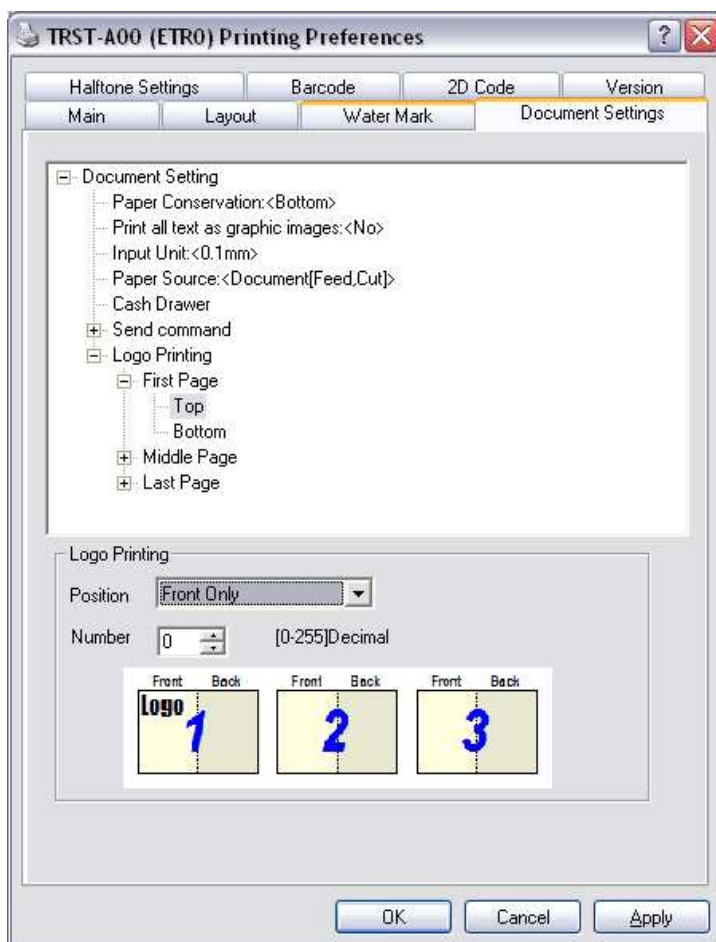
5.1.1 Documentsetting

- 1) Inthereceiptprinting,thepaperlengthdoesn't matter.Sinceitdependsonthenumberofitems onareceipt,areceiptlengthisnotspecified.Selectthespecifiedpapersize([58mmx297mm] or[80mmx297mm])thathasthepaperwidthyoudemand and.
- 2) Clickrightbuttonandselect"Properties"onthe"TRST-A00"icon toopentheprinter'sproperty (Sameas"PrinterModelSetting"),andclickon"PrintingPreference"button.
Clickon **DocumentSettings** tab.Select"Bottom"onthe"PaperConservation". Click"OK".
Alsoselect"Document[Feed,Cut]"onthe"PaperSource".Click"OK".
Accordingtothesettingofthe"PaperConservation"andthe"PaperSource",thereceiptiscut attheproperposition(endofreceipt)automatically.



5.1.2 Logosetting

- 1) Click on **DocumentSettings** tab. Select "FirstPage-Top" on the "Logo Printing" to specify the logo position on the receipt. Select "Front Only" at the "Position" combo-box, also select the logo number at the "Number" combo box to specify the logo. The logo has to be downloaded by the TRST-A1x commander before this setting. Click "OK".



5.1.3 Fontsetting

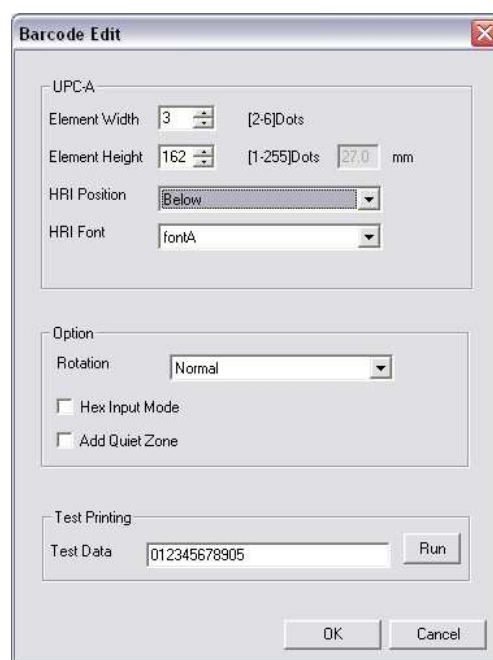
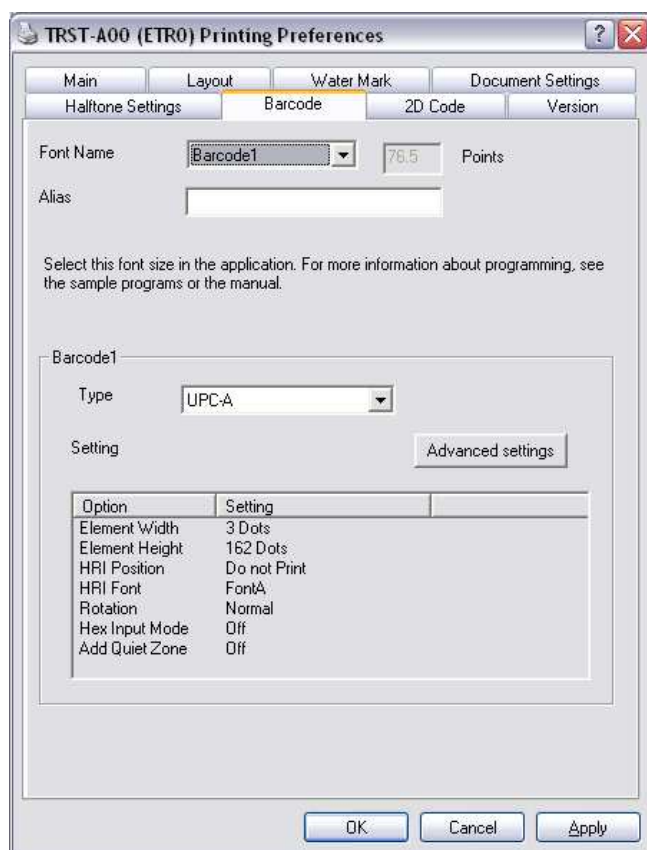
- 1) Select the printer font and send the character data to the printer. Following are printer fonts that can be selected by an application. The sizes of the fonts are fixed.

Font2			
Font Name	Point	Font Name	Point
FontA11	9.9	FontB11	9.9
FontA12	19.9	FontB12	19.9
FontA21	9.9	FontB21	9.9
FontA22	19.9	FontB22	19.9
FontA24	39.7	FontB24	39.7
FontA42	19.9	FontB42	19.9
FontA44	39.7	FontB44	39.7
FontA48	79.4	FontB48	79.4

FontA84	39.7	FontB84	39.7
FontA88	79.4	FontB88	79.4

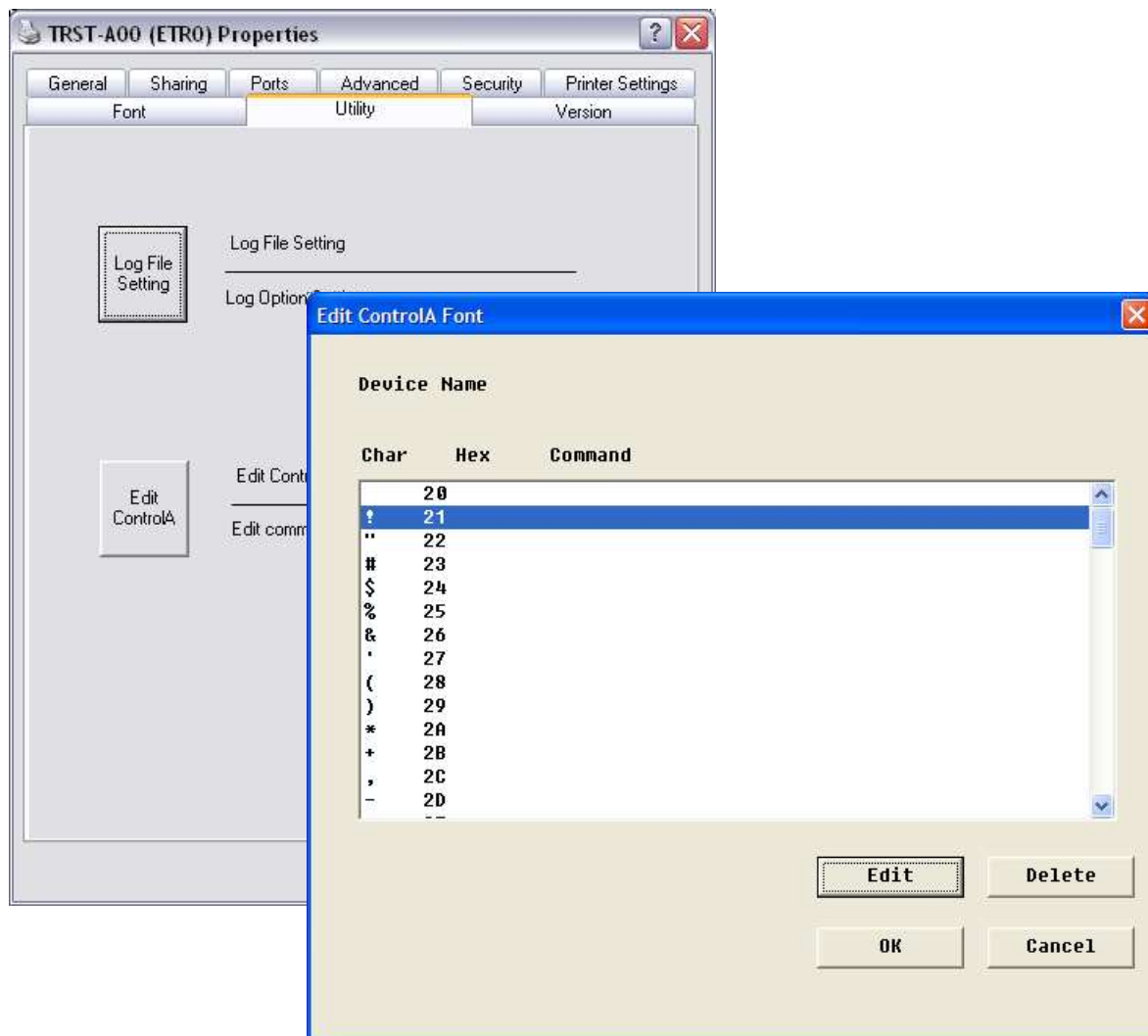
5.1.4 Barcodesetting

- 1) Click right button and select "Properties" on the "TRST-A00" icon to open the printer's property (Same as "Printer Model Setting"), and click on "Printing Preference" button. Click on **Barcode** tab. Select "Barcode1" at the Font Name combo-box, and select the barcode type for Barcode1. Press "Advanced settings" button and specify the barcode attributes (width, height and HRI). Click "OK".
- 2) Select the Barcode1 font and send the numerical character data (e.g. "01234567890123") to the printer. Refer to "5.4 [Print Rendering](#)" in detail.

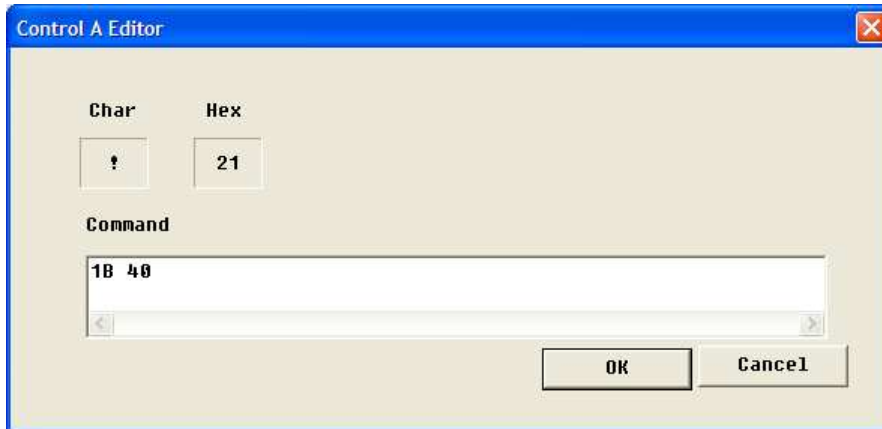


5.1.5 ControlAFontsetting

- 1) Click right button and select "Properties" on the "TRST-A1X" icon to open the printer's property (Same as "Printer Model Setting"), and click on "Edit ControlA" button on "Utility" Tab.
- 2) Select character "!" (0x21) and click on "Edit" button.

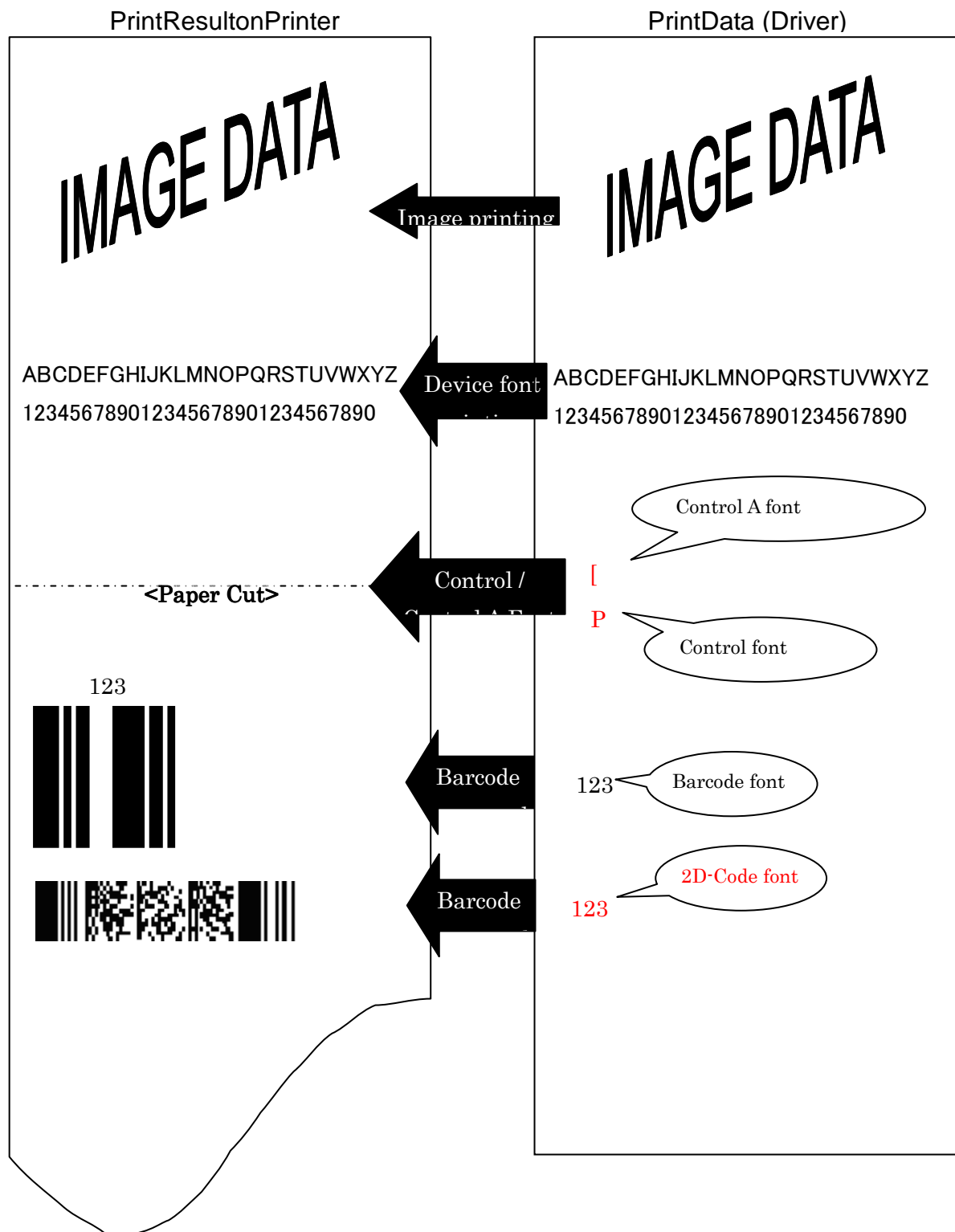


- 3) Input 1B40 (Initialize the printer command) and click on OK.



- 4) Select the Control A font and send "!" character to the printer. The printer will be initialized at the end of the receipt. Refer to "5.4 [Print Rendering](#)" in detail.

5.2 PrintRendering



6 Note

6.1 Logfilesetting

This function is for the analysis of the printer and the printer driver issues. Therefore please don't change this setting normally. It would slow down the performance.