

TRST-A00 Printer Driver for Windows 7 User's Manual

First Edition : 1 December 2010

TOSHIBA TEC SINGAPORE PTE LTD

Copyright(C)2010

TOSHIBA TEC SINGAPORE PTE LTD

This document describes the precautions for using the TRST-A00 Printer Driver for Windows 7.

This document assumes that the reader is familiar with the following:

- General characteristics of Windows and Printer Driver for Windows.
- General characteristics of TRST-A00 printer

Notes:

- All rights reserved. It is prohibited to use or duplicate a part or whole of this document without the permission of TOSHIBA TEC SINGAPORE PTE LTD.
- This document is subject to change without prior notice.
- * Microsoft, Windows, and Windows 7 are registered trademarks of Microsoft Corporation in the United States and/or other countries.
- * The official name of Windows is the “Microsoft Windows Operating System” .

Revision Record

No.SPAA-344

TRST-A00 – Printer Driver for Windows 7 User's Manual

Rev.No.	Date	Pages	Description
01	Dec 1, 2010	---	Original issue

Table of Contents

1	Operation Environment	5
2	How to install the Printer Driver	6
2.1	Install by plug and play	6
2.2	Manual Install through "Add Printer" wizard (Serial I/F)	6
2.2.1	Add Printer	6
3	How to update the Printer Driver	12
3.1	Update Driver	12
4	How to uninstall the Printer Driver	17
5	Examples for a receipt printing	21
5.1	Receipt printing	21
5.1.1	Document setting	23
5.1.2	Logo setting	24
5.1.3	Font setting	25
5.1.4	Barcode setting	25
5.1.5	ControlA Font setting	27
5.2	Print Rendering	29
6	Note	30
6.1	Log file setting	30

1 Operation Environment

This printer driver works with below environment.

OS	Windows 7 Professional, Windows 7 Ultimate
I/F	Serial(RS232C), USB

2 How to install the Printer Driver

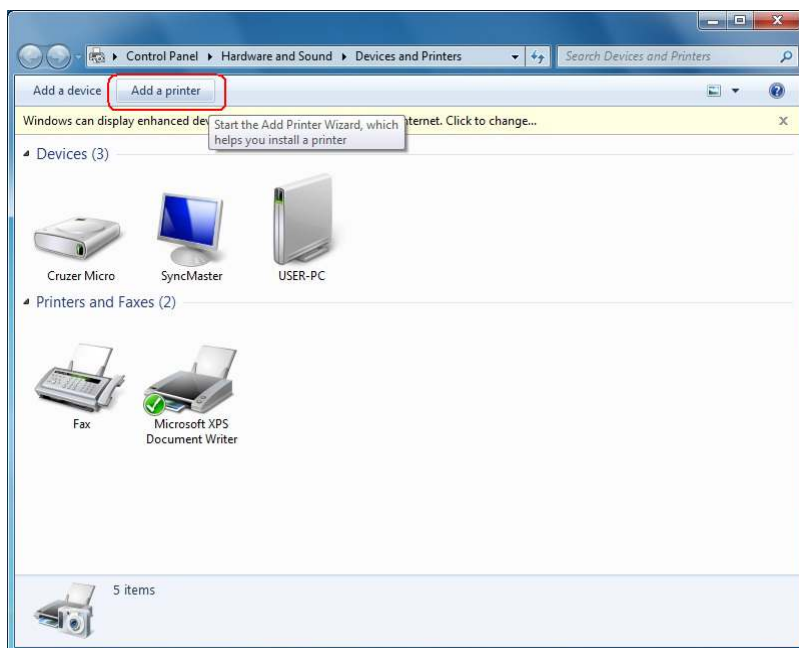
2.1 Install by plug and play

When you connect the printer to the computer, Windows 7 will not display the Hardware Wizard.
You need to manually install the driver as shown in the next section.

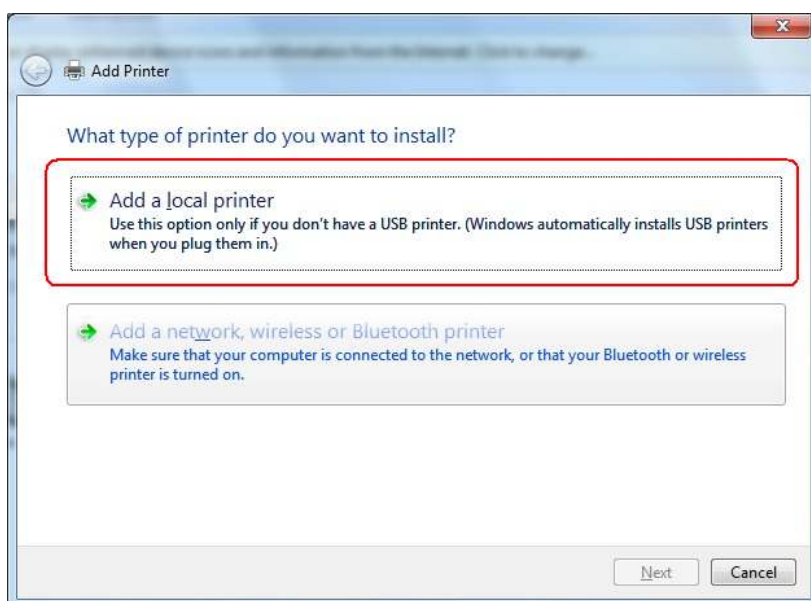
2.2 Manual Install through "Add Printer" wizard (Serial I/F)

2.2.1 Add Printer

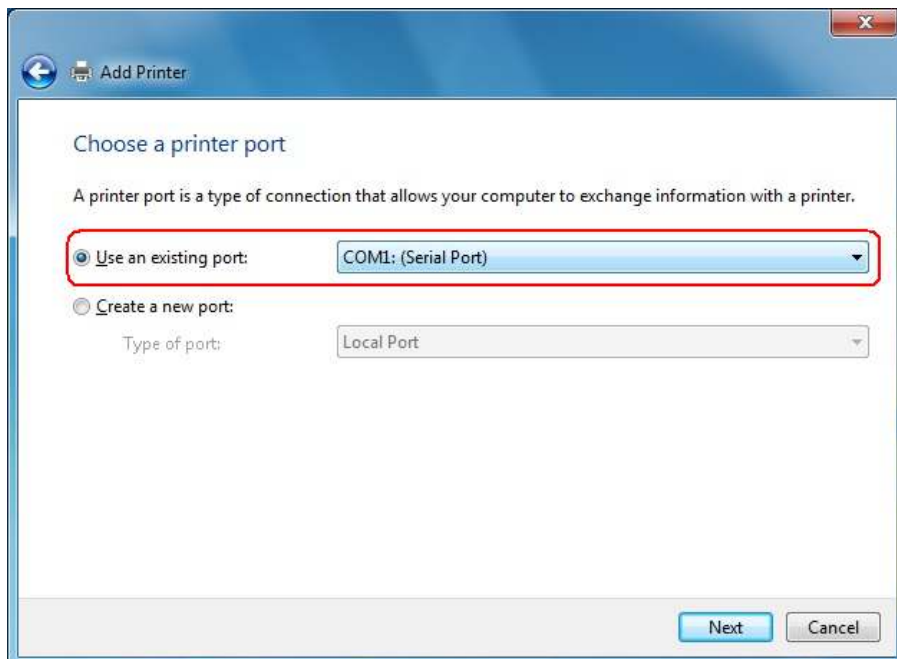
Open the 'Devices and Printers' and click the 'Add a printer' button.



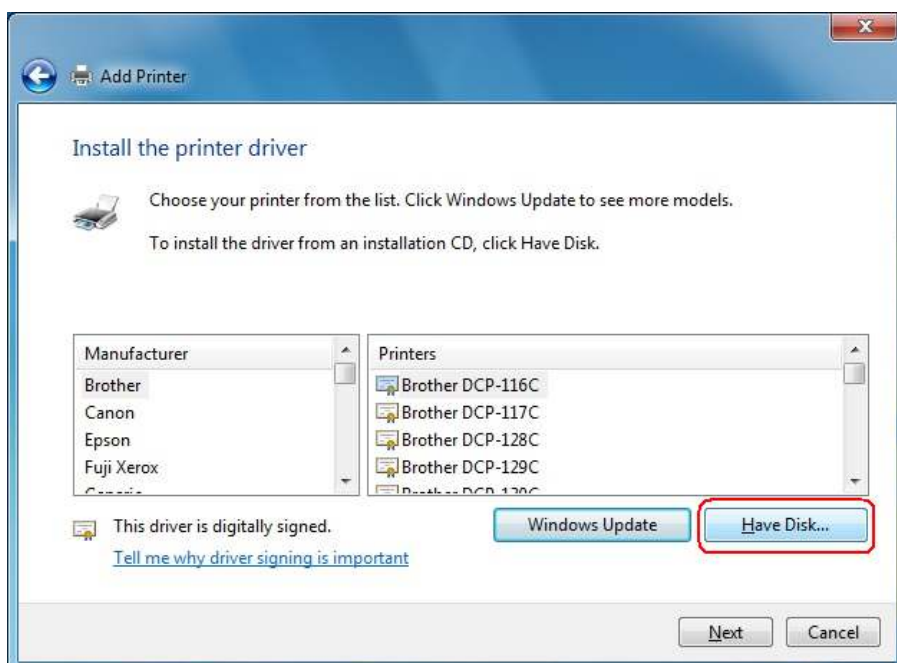
Select 'Add a local printer' then click 'Next'



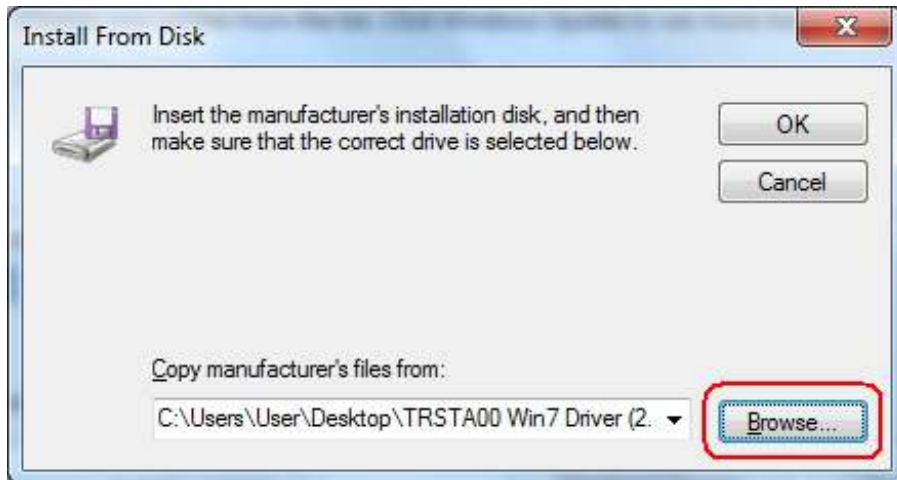
Select 'Use an existing port' option and select from the dropdown list the port you want to use (ex: COM1 or USB). Then click 'Next'.



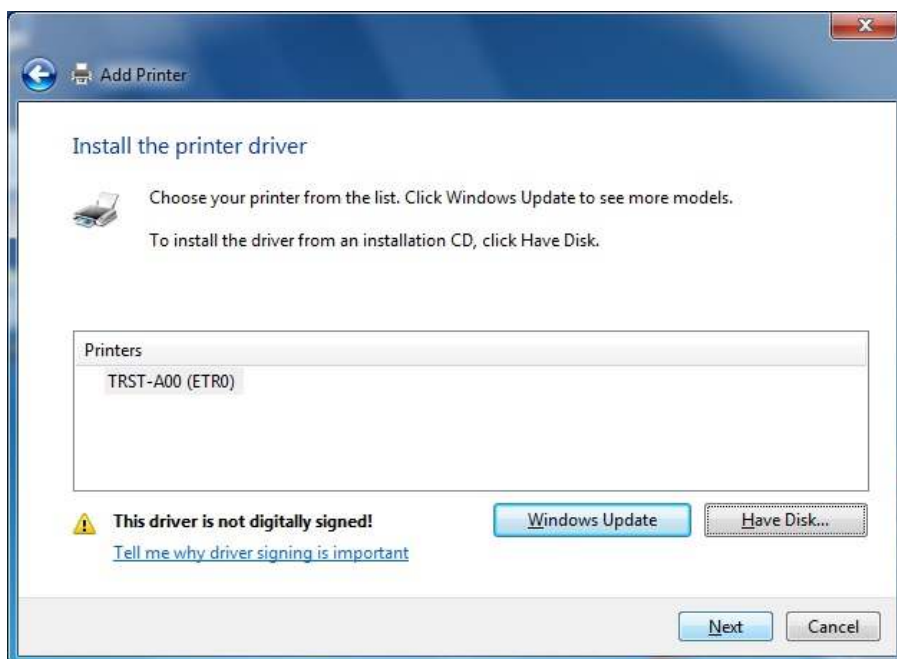
Click 'Have Disk'.



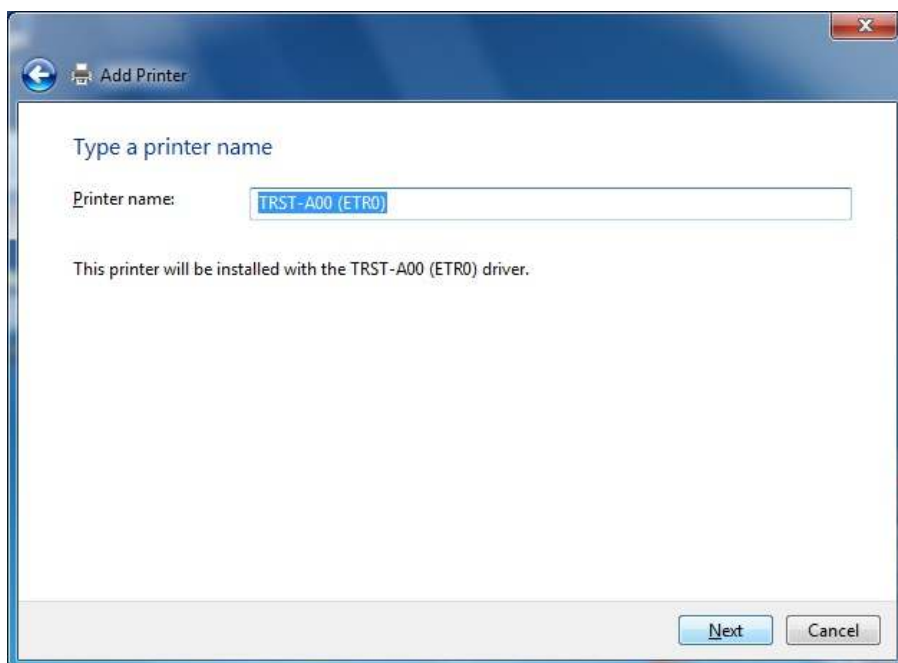
Click 'Browse' and locate the folder where the printer driver is saved.



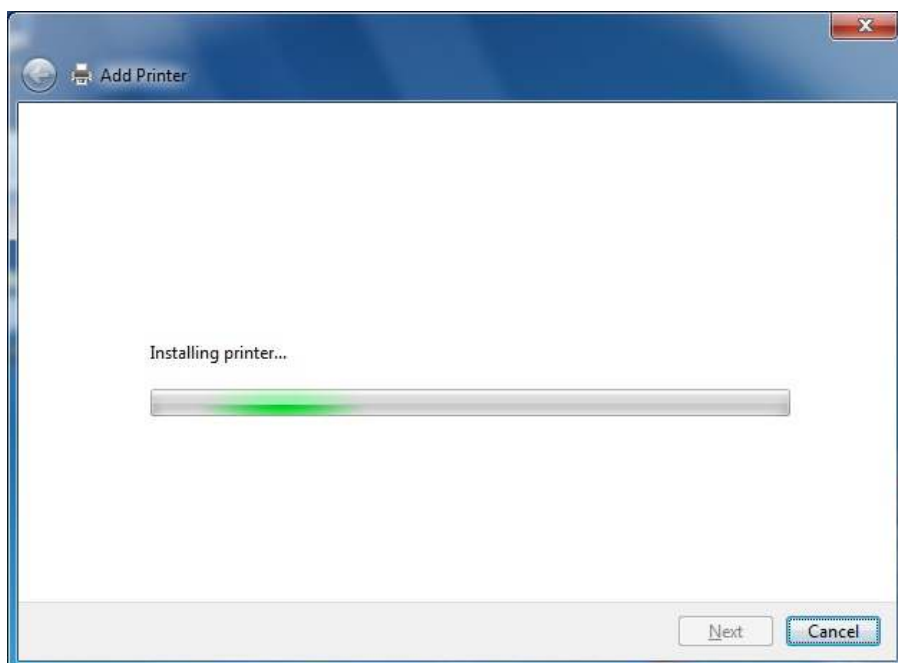
The name of the printer to be installed will appear. Click 'Next'.



Optionally, you may modify the default printer name. Then click 'Next'.



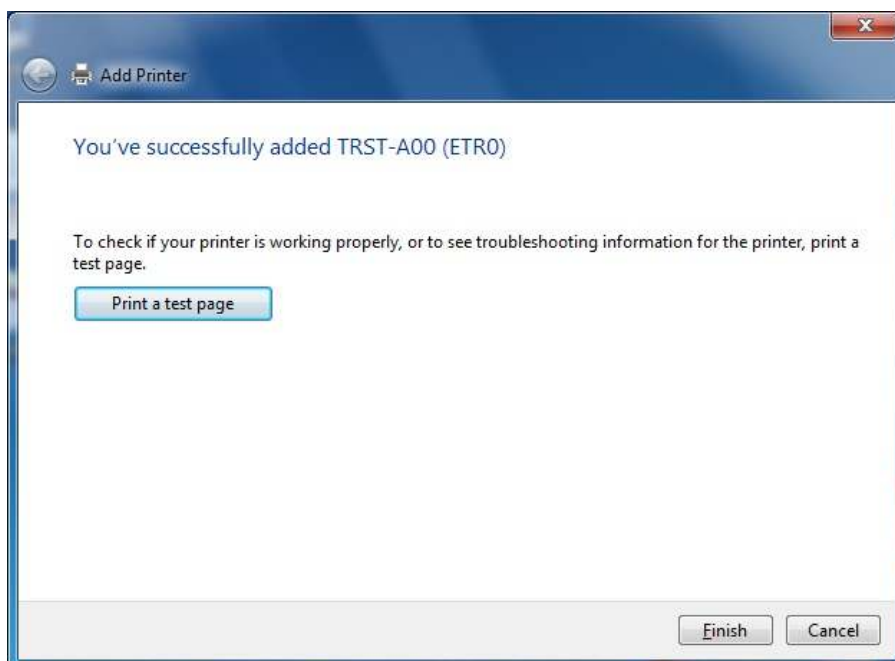
The following window shows that the printer driver is being installed in your system.



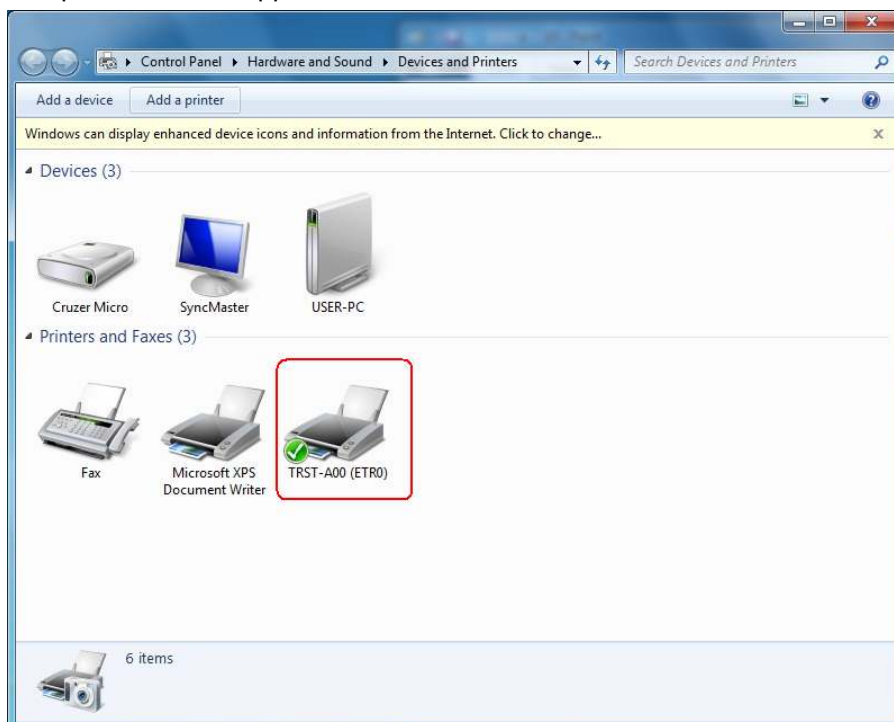
In the middle of the installation, the following window pops up. Click 'Install this driver software anyway' to proceed with the installation.



You may print a test page after the printer is installed. Click 'Finish' to complete the installation.



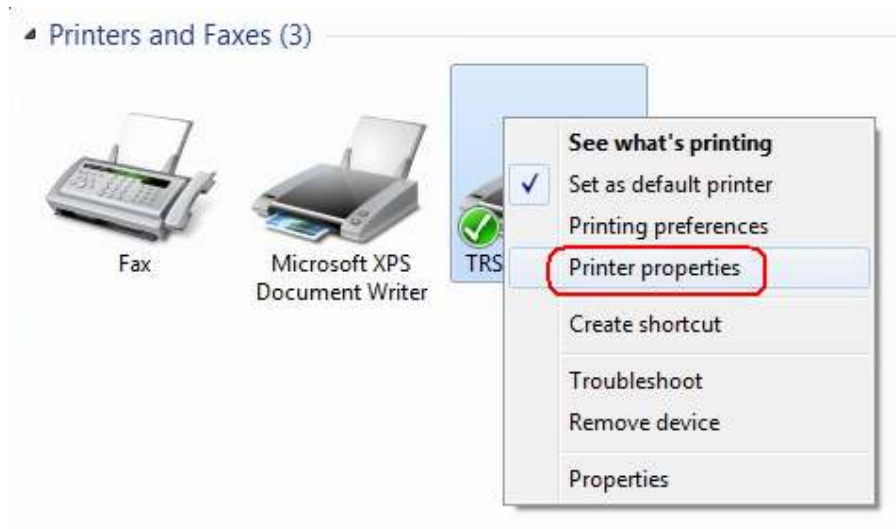
The printer icon will appear on the Devices and Printers window.



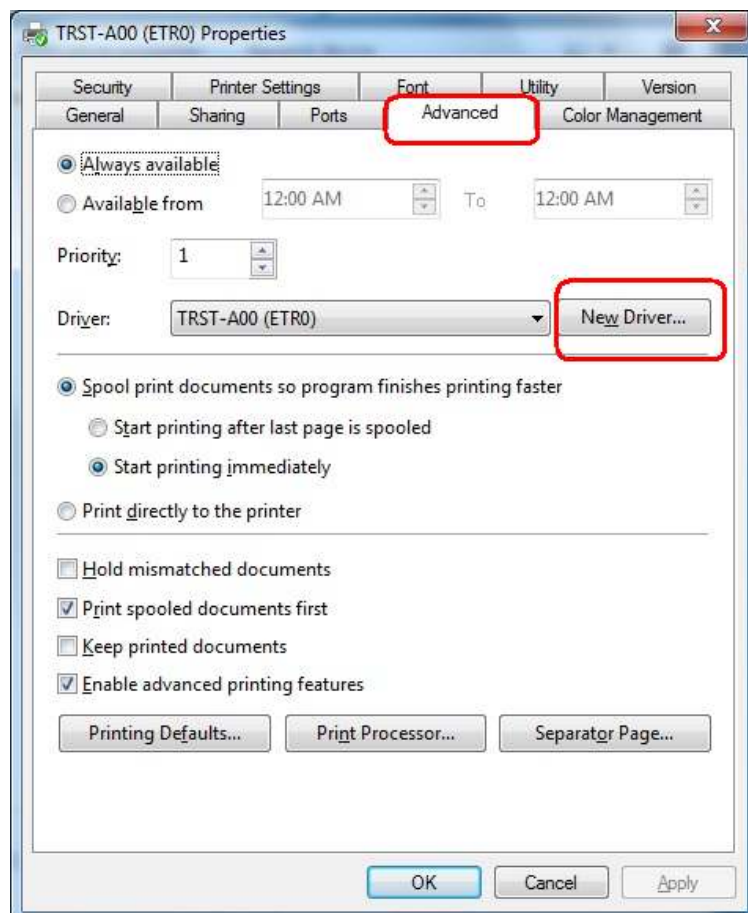
3 How to update the Printer Driver

3.1 Update Driver

Open the 'Devices and Printers'. Right-click on the 'TRST-A00' printer icon and select 'Printer Properties'.



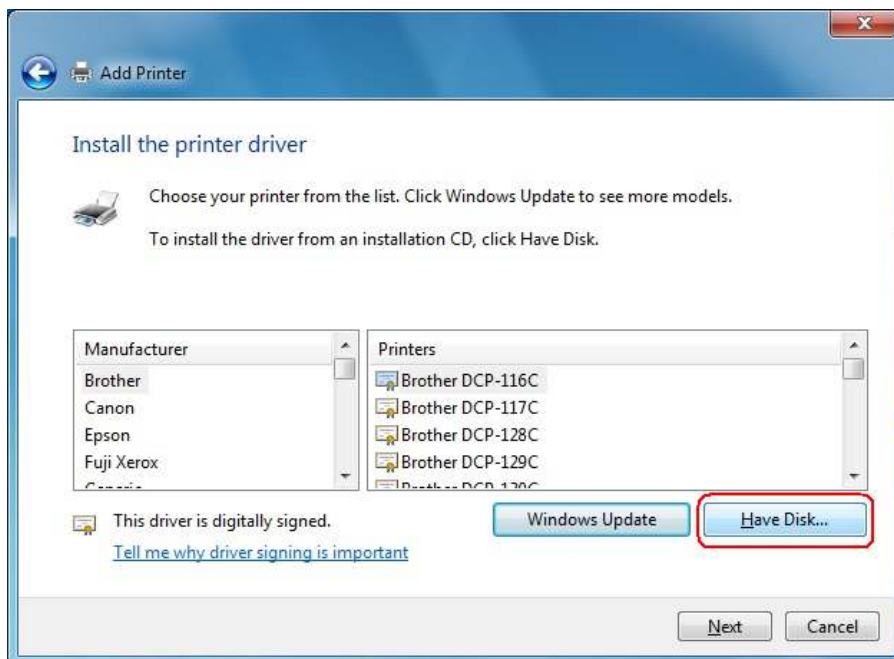
Go to the 'Advanced' tab and click 'New Driver'.



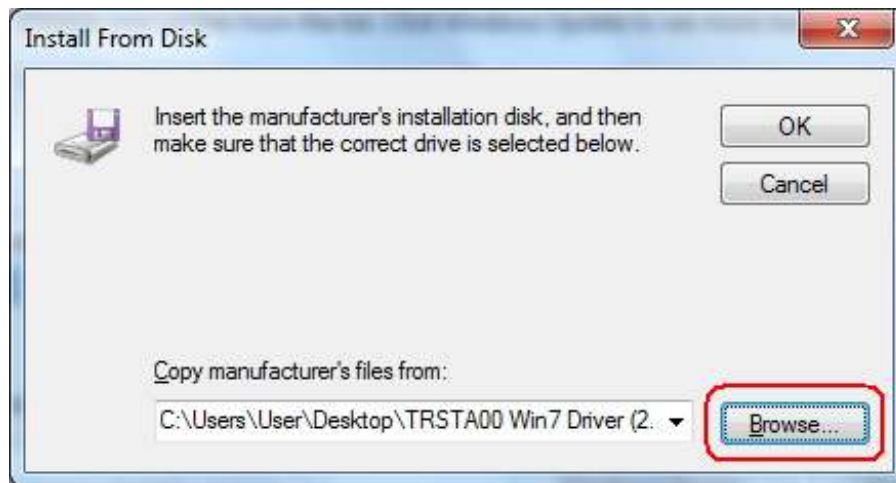
The 'Add Printer Driver Wizard' will start. Click 'Next' to continue.



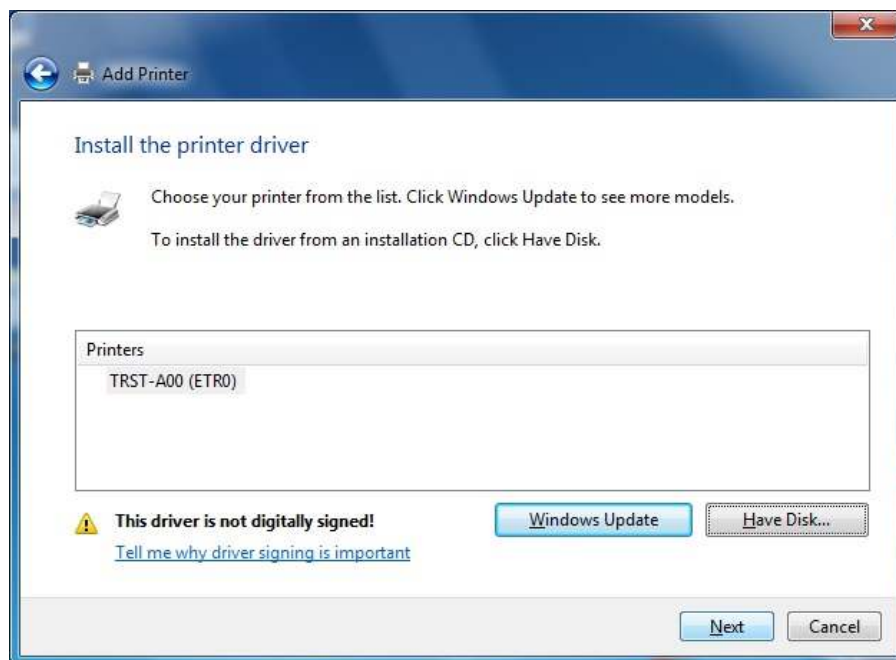
Click 'Have Disk'.



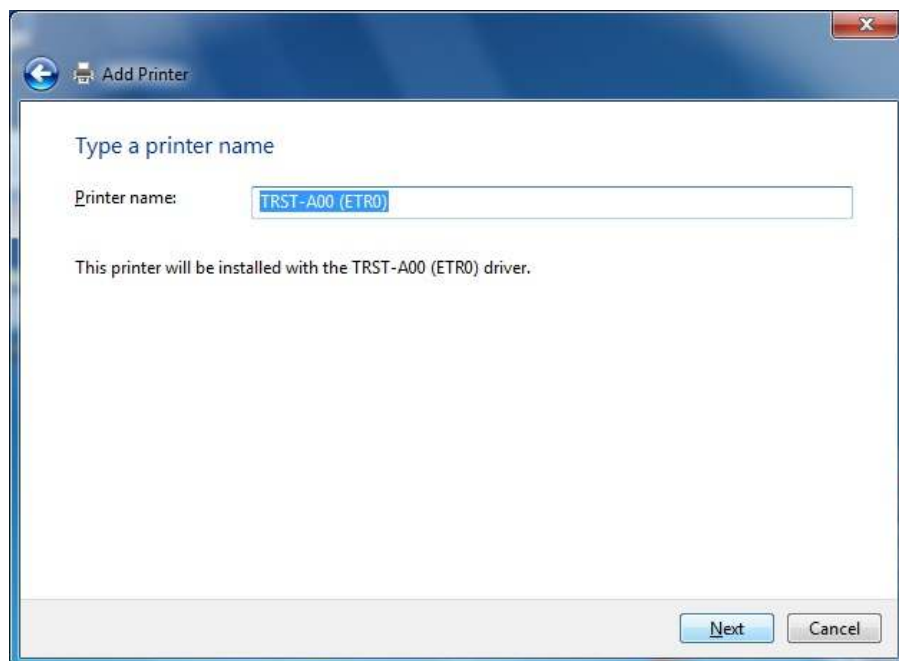
Click 'Browse' and locate the folder where the printer driver is saved.



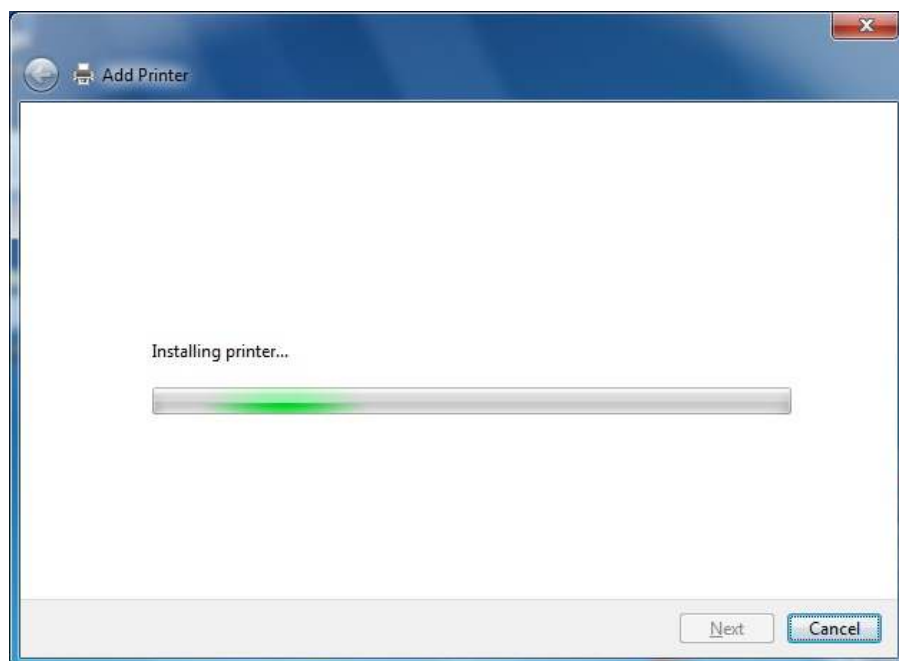
The name of the printer to be installed will appear. Click 'Next'.



Optionally, you may modify the default printer name. Then click 'Next'.



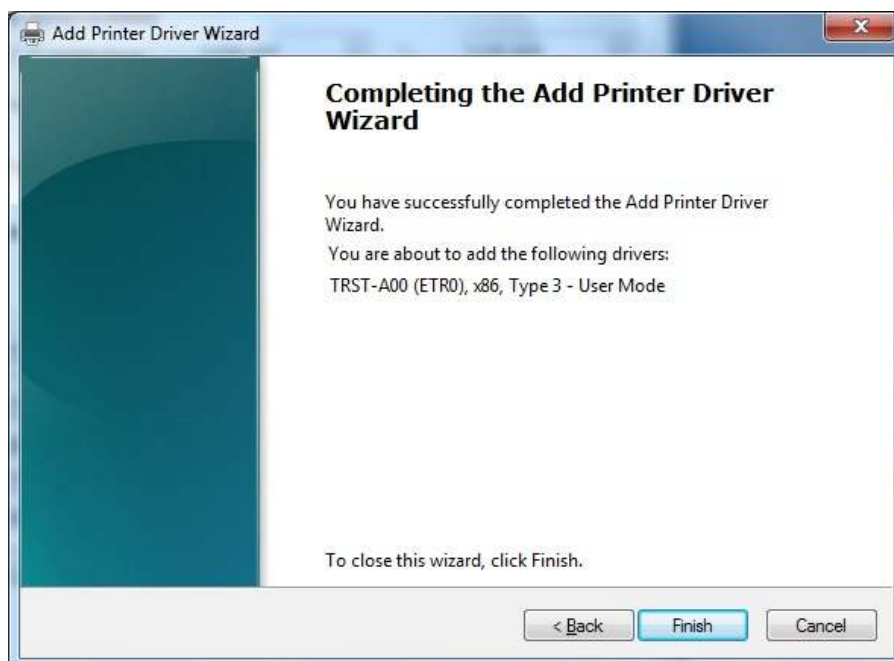
The following window shows that the printer driver is being installed in your system.



In the middle of the installation, the following window pops up. Click 'Install this driver software anyway' to proceed with the installation.



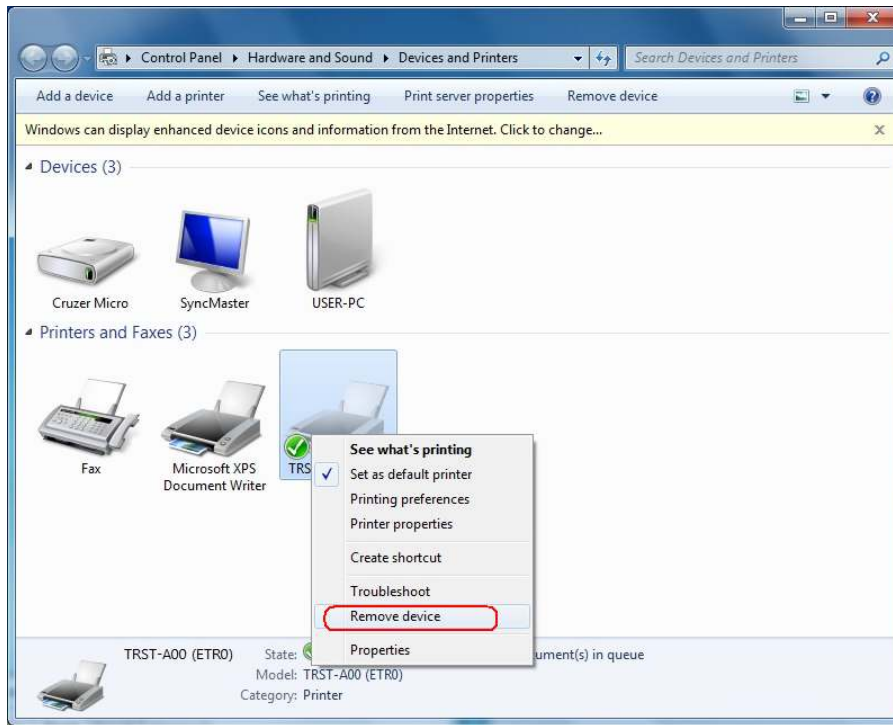
Click 'Finish' to complete the installation.



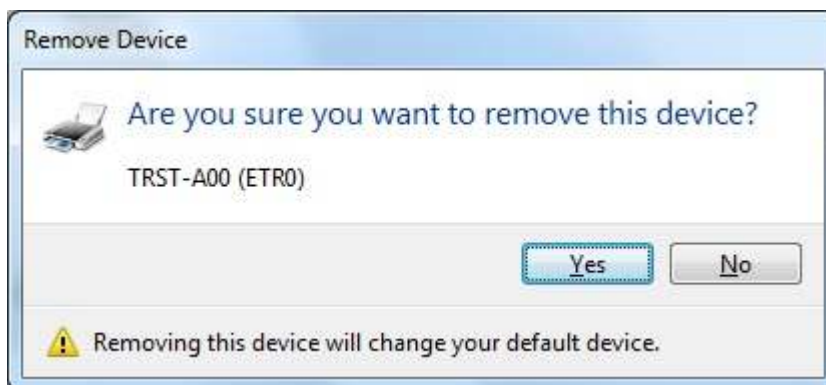
Restart the computer to successfully update the driver.

4 How to uninstall the Printer Driver

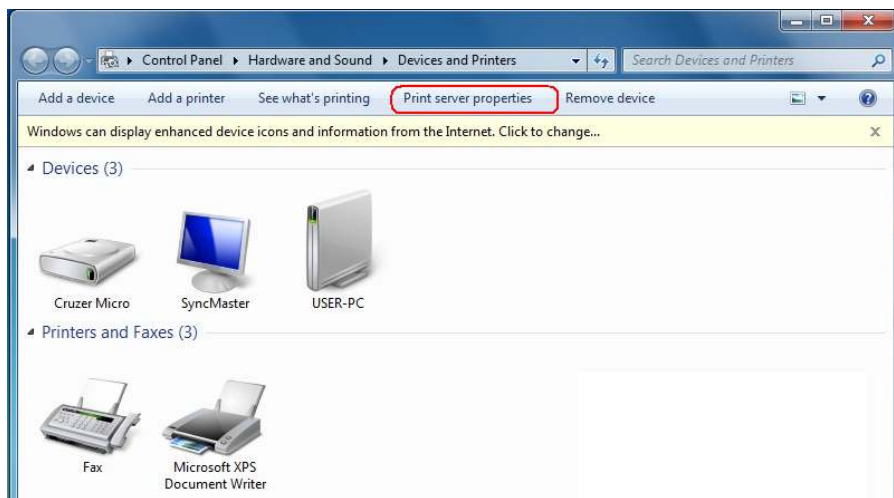
Open the 'Devices and Printers'. Right-click on the 'TRST-A00' printer icon and select 'Remove device'.



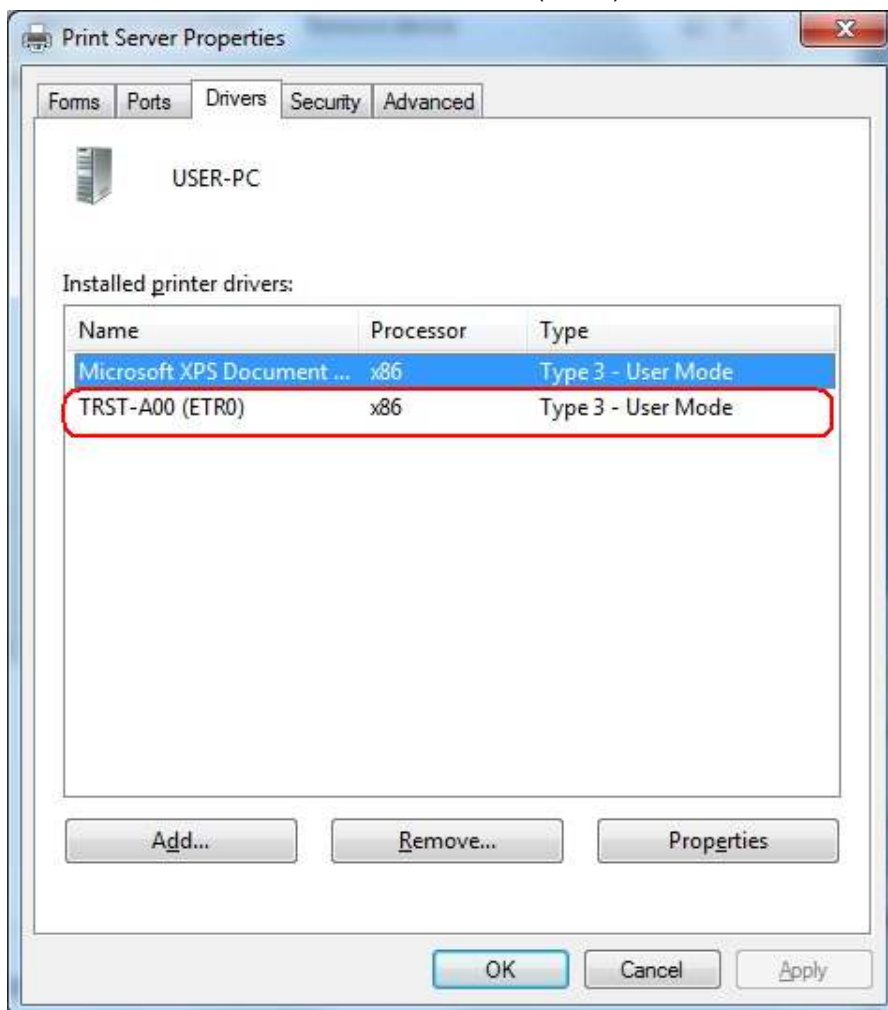
Click 'Yes' to confirm.



From Devices and Printer folder select any printer icon (example, Microsoft XPS Document Writer) to display additional options at the top portion of the window. Click 'Print server properties'.



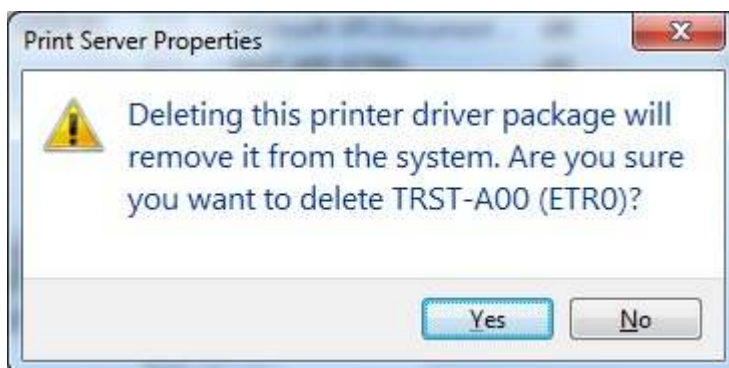
Go to the 'Drivers' tab and select 'TRST-A00 (ETR0)'. Click 'Remove'.



Select the 'Remove driver and driver package' option then click 'OK'.



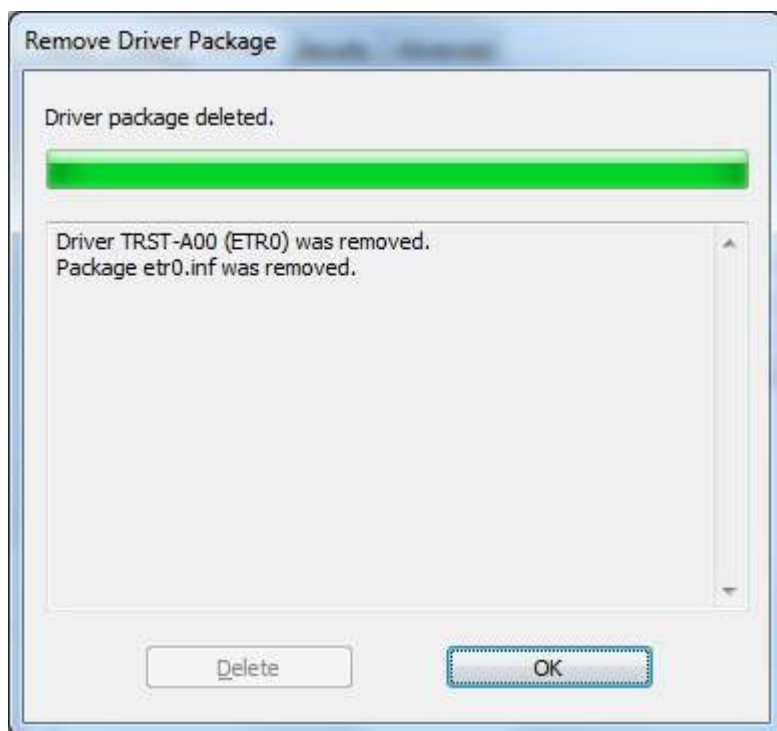
Click 'Yes' to confirm.



Click 'Delete' to continue.



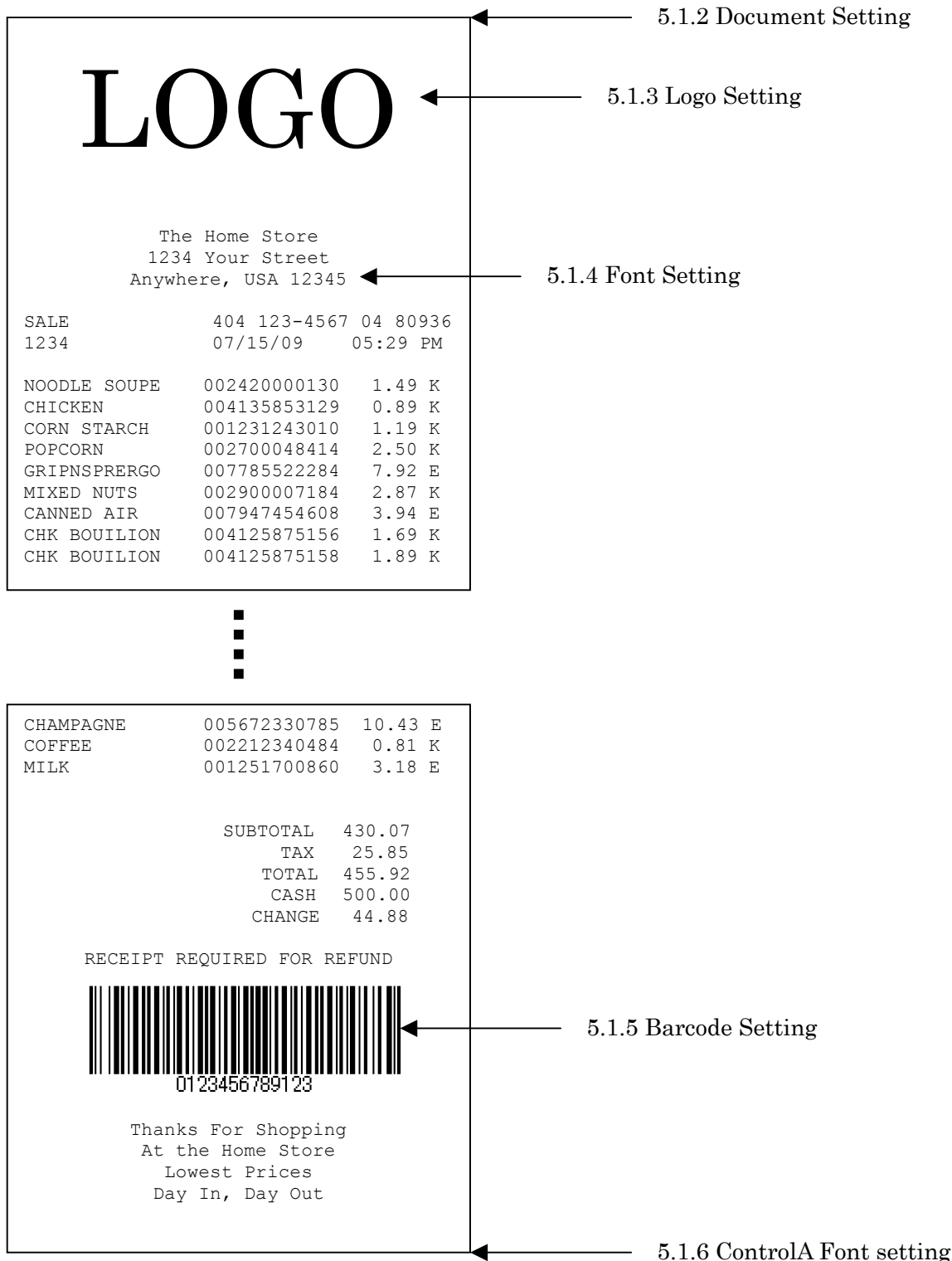
Click 'OK' to finish.



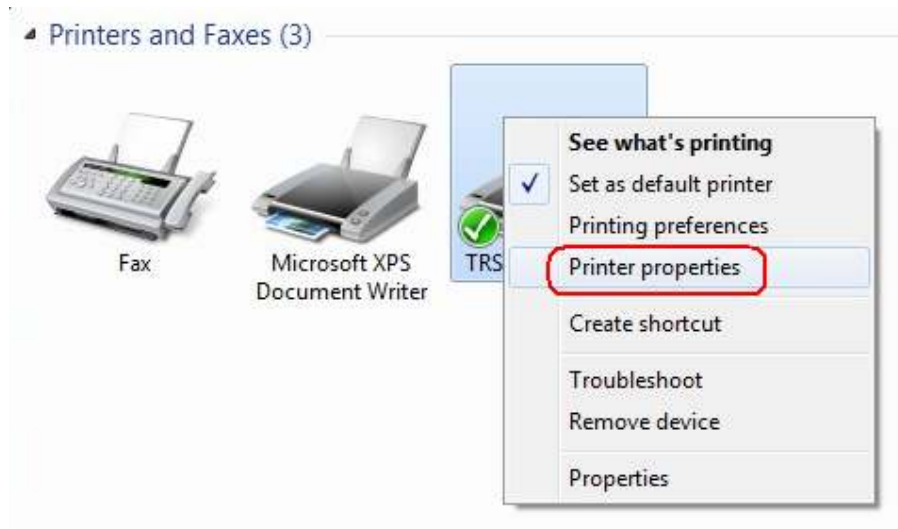
The printer driver has been successfully removed from your system.

5 Examples for a receipt printing

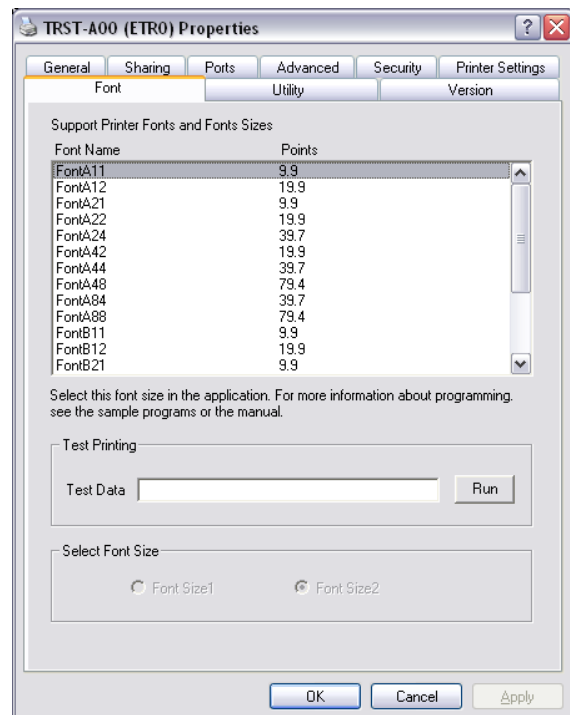
5.1 Receipt printing



- 1) Click right button and select "Properties" on the "TRST-A00" icon to open the printer's property.

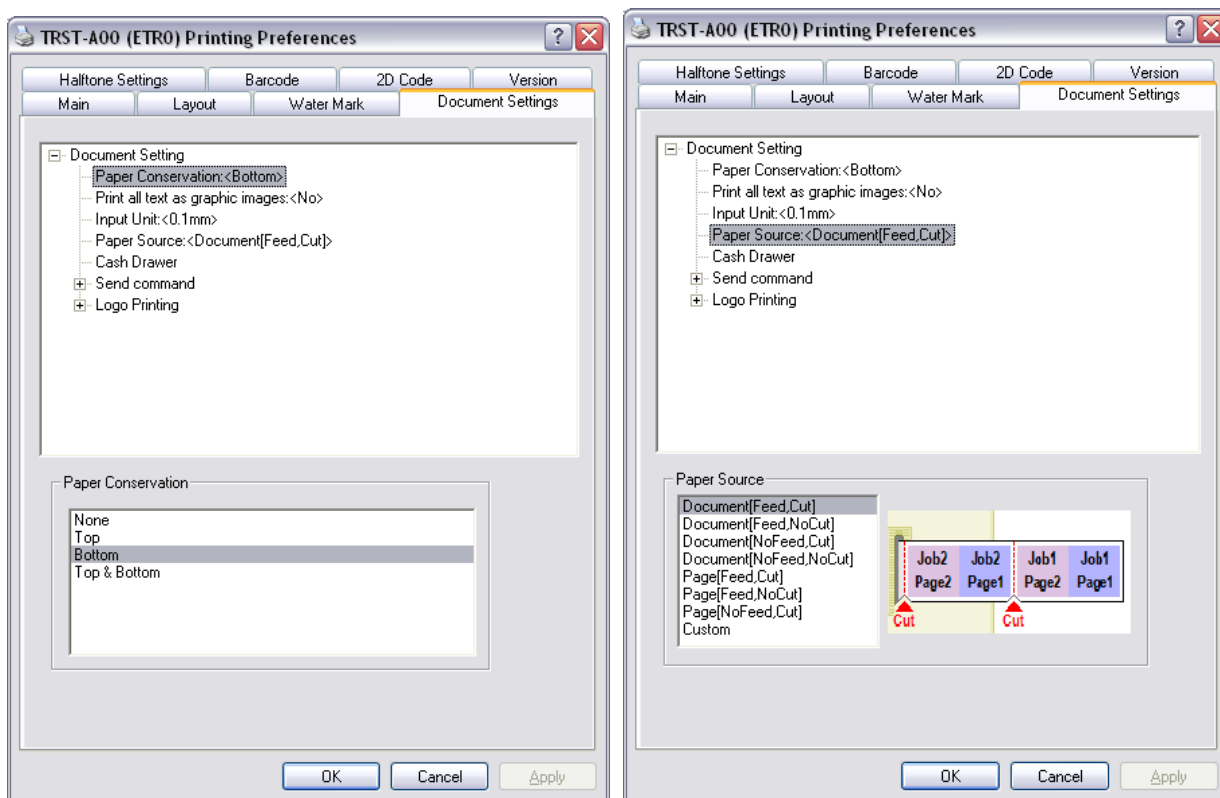


- 2) Click on **Font** tab. Select the Font Size you want. Click "OK". Font size has to correspond to the printer font setting.



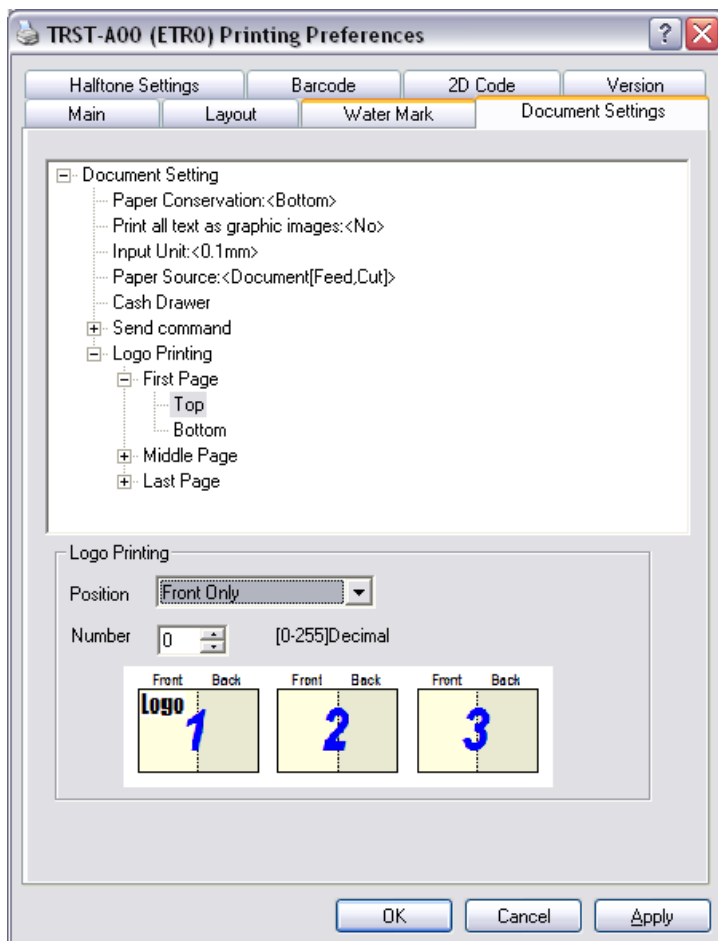
5.1.1 Document setting

- 1) In the receipt printing, the paper length doesn't matter. Since it depends on the number of items on a receipt, a receipt length is not specified. Select the specified paper size ([58mm x 297mm] or [80mm x 297mm]) that has the paper width you demand.
- 2) Click right button and select "Properties" on the "TRST-A00" icon to open the printer's property (Same as "Printer Model Setting"), and click on "Printing Preference" button.
Click on **Document Settings** tab. Select "Bottom" on the "Paper Conservation". Click "OK".
Also select "Document[Feed,Cut]" on the "Paper Source". Click "OK".
According to the setting of the "Paper Conservation" and the "Paper Source", the receipt is cut at the proper position (end of receipt) automatically.



5.1.2 Logo setting

- 1) Click on **Document Settings** tab. Select "First Page - Top" on the "Logo Printing" to specify the logo position on the receipt. Select "Front Only" at the "Position" combo-box, also select the logo number at the "Number" combo box to specify the logo. The logo has to be downloaded by the TRST-A1x commander before this setting. Click "OK".



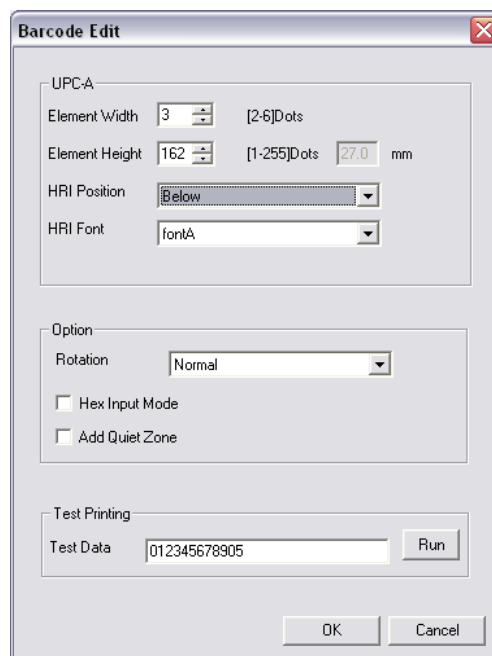
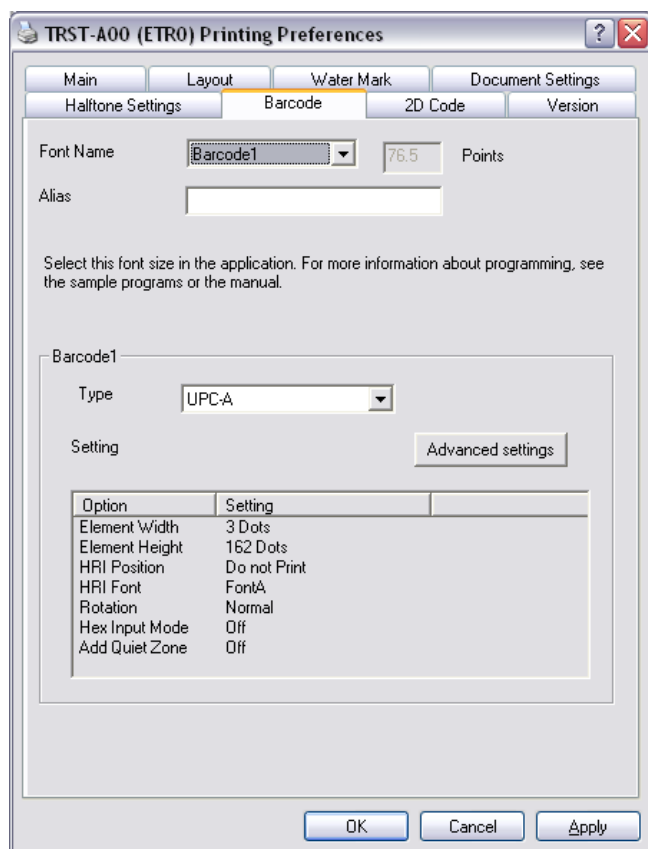
5.1.3 Font setting

- 1) Select the printer font and send the character data to the printer. Following are printer fonts that can be selected by an application. The sizes of those fonts are fixed. Device font is not supported by .Net Framework technology. Any application developed by .Net Framework will not be able to display the device font. We recommend using Font Substitution instead.

Font2			
Font Name	Point	Font Name	Point
FontA11	9.9	FontB11	9.9
FontA12	19.9	FontB12	19.9
FontA21	9.9	FontB21	9.9
FontA22	19.9	FontB22	19.9
FontA24	39.7	FontB24	39.7
FontA42	19.9	FontB42	19.9
FontA44	39.7	FontB44	39.7
FontA48	79.4	FontB48	79.4
FontA84	39.7	FontB84	39.7
FontA88	79.4	FontB88	79.4

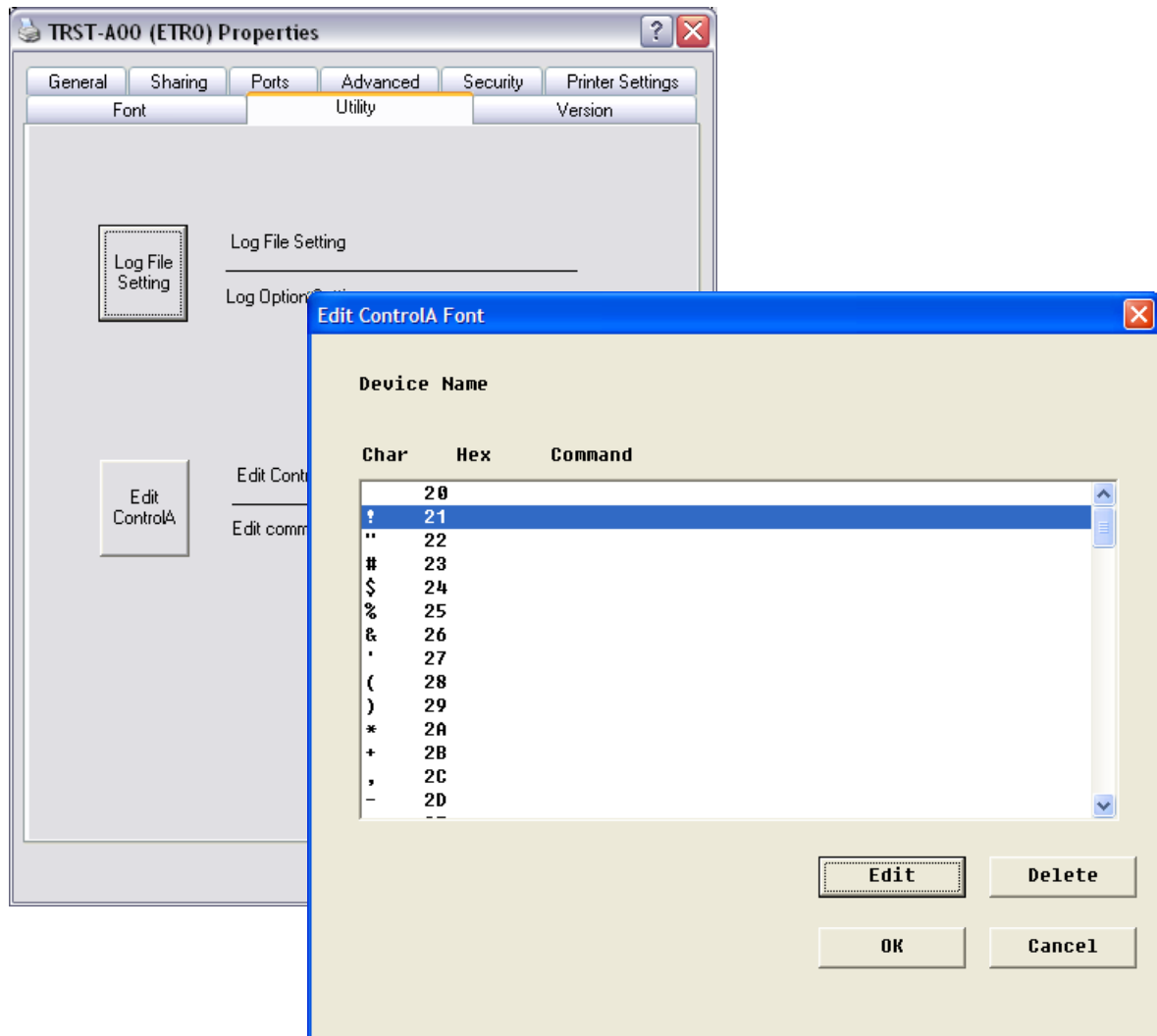
5.1.4 Barcode setting

- 1) Click right button and select "Properties" on the "TRST-A00" icon to open the printer's property (Same as "Printer Model Setting"), and click on "Printing Preference" button. Click on **Barcode** tab. Select "Barcode1" at the Font Name combo-box, and select the barcode type for Barcode1. Press "Advanced settings" button and specify the barcode attributes (width, height and HRI). Click "OK".
- 2) Select the Barcode1 font and send the numeral character data (e.g. "01234567890123") to the printer. Refer to "5.4 [Print Rendering](#)" in detail.

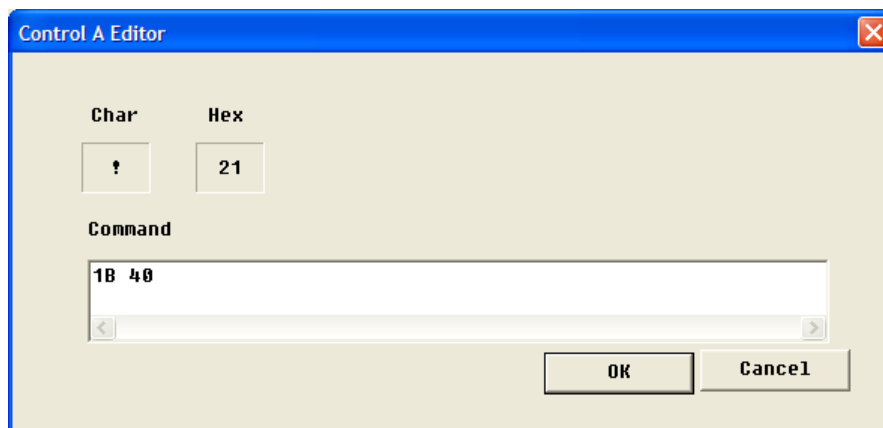


5.1.5 ControlA Font setting

- 1) Click right button and select "Properties" on the "TRST-A00" icon to open the printer's property (Same as "Printer Model Setting), and click on "**Edit ControlA**" button on "**Utility**" Tab.
- 2) Select character "!" (0x21) and click on "**Edit**" button.

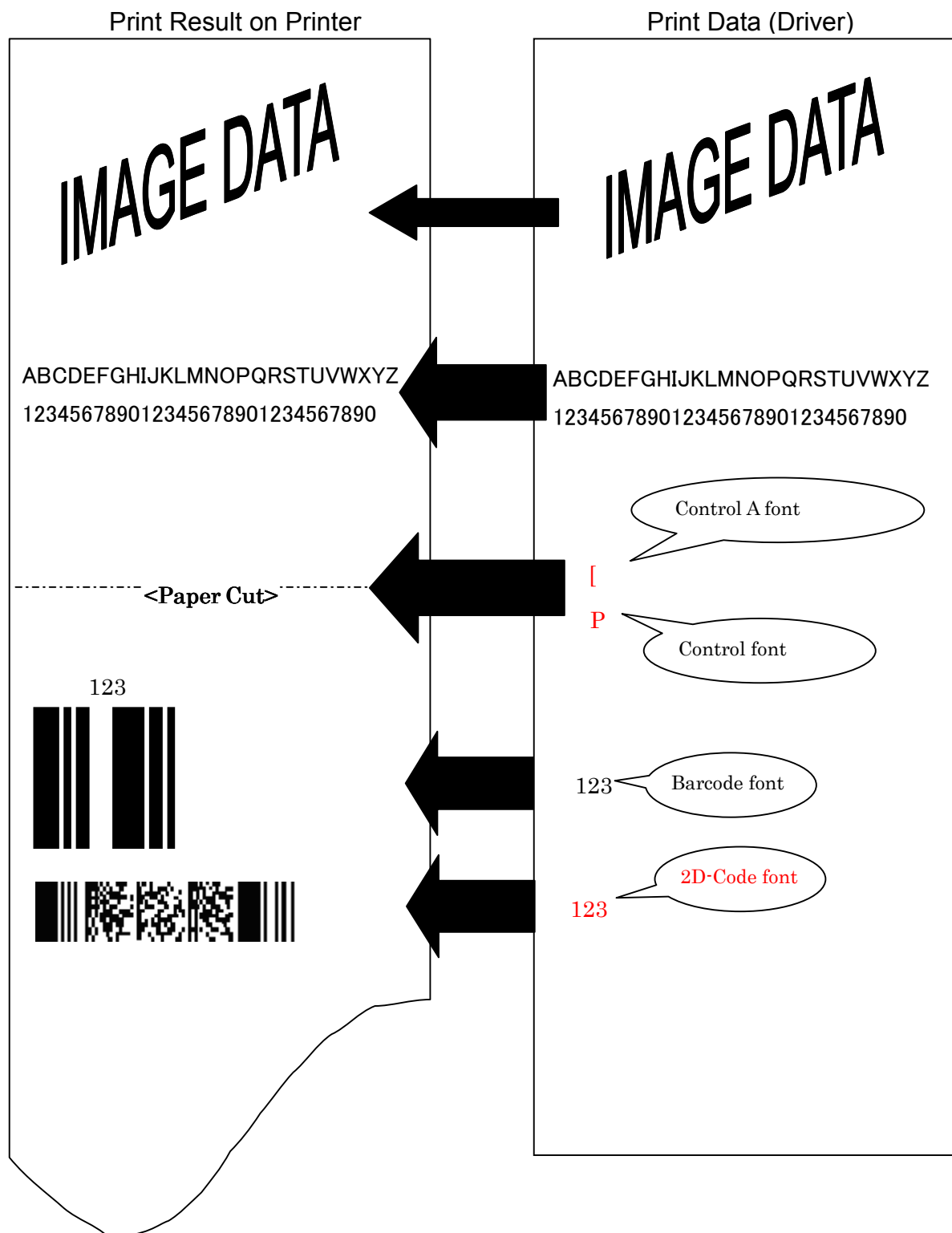


- 3) Input 1B 40 (Initialize the printer command) and click on OK.



- 4) Select the ControlA font and send “!” character to the printer. The printer will be initialized at the end of the receipt. Refer to “5.4 [Print Rendering](#)” in detail.

5.2 Print Rendering



6 Note

6.1 Log file setting

This function is for the analysis of the printer and the printer driver issues. Therefore please don't change this setting normally. It would slow down the performance.